



# DRAWING DIRECTORY

"THIS DRAWING AND SPECIFICATIONS, HEREIN, ARE THE PROPERTY OF DIGITAL EQUIPMENT CORPORATION AND SHALL NOT BE REPRODUCED OR COPIED OR USED IN WHOLE OR IN PART AS THE BASIS FOR THE MANUFACTURE OR SALE OF ITEMS WITHOUT WRITTEN PERMISSION. COPYRIGHT © 1975, DIGITAL EQUIPMENT CORPORATION"

## CUSTOMER PRINT SET INDEX

THIS IS PRINT SET

FOR CUSTOMER PRINT SET  
SEE B-TC-KL8-A-5

SEQUENCE

SEQUENCE

UNIT VARIATIONS		PRINT SET	
VAR	TITLE		
KL8-A	MULTIPLE SERIAL LINE UNIT		

REVISIONS	CHG. NO.	REV
	KL8-A-1	A

DRB 106

USED ON OPTION/MODEL	DRN. D. SULLIVAN	DATE 10/3/75	TITLE			
PDP8A	CHK'D. <i>Sid Roberts</i>	DATE 10-15-75	MULTIPLE SERIAL LINE UNIT			
	PROJ ENG. <i>Larry Roberts</i>	DATE 11/13/75	SIZE	CODE	NUMBER	REV
	PROD. <i>Karl Kwada</i>	DATE 11/21/75	B	DD	KL8-A	A
	FIELD SERV. <i>Bell Esch</i>	DATE	DIST			
SHEET 1 OF 2						

CUSTOMER PRINT SET		ELECTRICAL					CUSTOMER PRINT SET		MECHANICAL				
MFG. SET	FIND NO.	DRAWING NO.	REV	NO OF SHT	DESCRIPTION	OPTION NO./FILE DATE	MFG. SET	FIND NO.	DRAWING NO.	REV	NO OF SHT	DESCRIPTION	OPTION NO./FILE DATE
	1	A-PL-KL8-A-0	*	1	MULTIPLE SERIAL LINE UNIT			1	A-PL-KL8-A-0	*	1	MULTIPLE SERVICE LINE UNIT	
		A-SP-KL8-A-1	*	4	KL8-A FIELD SERVICE INSTALL. AND ACCEPTANCE PROCEDURE			3	B-DD-H326-0	#	2	KL8-A PATCH PANEL	
		A-SP-KL8-A-2	*	1	SHIPPING LIST			4	D-IA-BC08W-0-0	#	2	CABLE ASSEMBLY	
		A-SP-KL8-A-3	A	1	SOFTWARE LIST, KL8-A								
		A-SP-KL8-A-4	*	18	KL8-A ENGINEERING SPEC			5	D-IA-BC08X-0-0	#	1	CABLE, 50 PIN TO 4-8 PIN	
	2	D-UA-M8319-0-0	B	1	MULTIPLE SERIAL LINE UNIT			6	D-IA-BC08Y-0-0	#	1	CABLE ASSEMBLY	
		A-PL-M8319-0-0	B	4	MULTIPLE SERIAL LINE UNIT (P.L.)								
		D-CS-M8319-0-1	B	10	CIRCUIT SCHEMATIC			7	D-IA-BC08Z-0-0	#	1	CABLE ASSEMBLY	
		K-CO-M8319-0-4	#	1	X-Y COORDINATE HOLE LOCATION								
		D-AH-M8319-0-5	#	1	ASSY/DRILLING HOLE LAYOUT								
		B-MH-M8319-0-6	#	1	MODULE ECO HISTORY								
	3	B-DD-H326-0	#	2	KL8-A PATCH PANEL								

CUSTOMER PRINT SET CODES  
X = PRINT OF DOCUMENT INCLUDED IN PRINT SET  
C = INCLUDES ALL PRINTS INDICATED ON DOCUMENT  
S = CONFIDENTIAL AUTHORIZED SIGNATURE REQUIRED

TITLE: MULTIPLE SERIAL LINE UNIT  
SHEET 2 OF 2  
SIZE CODE: B DD  
NUMBER: KL8-A  
REV: A



This drawing and specifications, herein, are the property of Digital Equipment Corporation and shall not be reproduced or copied or used in whole or in part as the basis for the manufacture or sale of items without written permission. COPY RIGHT © 1975

DIGITAL EQUIPMENT CORPORATION MAYNARD, MASSACHUSETTS						
ENGINEERING SPECIFICATION					DATE 07/30/75	
TITLE KL8-A Field Service Installation and Acceptance Procedure						
REVISIONS						
REV	DESCRIPTION	CHG NO	ORIG	DATE	APPD BY	DATE

ENG <i>Larry Haskin</i>	DATE <i>7/31/75</i>	APPD <i>Larry Haskin</i>	SIZE <b>A</b>	CODE SP	NUMBER KL8-A-1	REV
-------------------------	---------------------	--------------------------	---------------	---------	----------------	-----

DEC 16 (392)-1079-N971  
DRA 107

ENGINEERING SPECIFICATION				CONTINUATION SHEET			
TITLE KL8-A Field Service Installation and Acceptance Procedure							
<p><b>I General</b></p> <p>This procedure defines the performance standard required of the KL8-A M8319. This procedure is for both system acceptance and add-on acceptance.</p> <p><b>II Inspection</b></p> <ol style="list-style-type: none"> <li>1. Remove the hardware from the packing material.</li> <li>2. Inventory hardware against the shipping list.</li> <li>3. Inventory software against software list, if ordered.</li> <li>4. Check the hardware for loose or broken components.</li> </ol> <p><b>III Equipment Required</b></p> <ol style="list-style-type: none"> <li>1. PDP8-A series computer</li> <li>2. 4K or more of Read/Write memory</li> <li>3. Programmer's Console. PDP8-A console (KC8-A) or modified PDP8-M (KC8-M) console*</li> <li>4. MAINDEC-08-DJKLA</li> <li>5. 50 pin connector (70-11451) or H326 patch panel with BC08Y-10</li> <li>6. Paper tape input device</li> </ol> <p>Note: It is the customer's responsibility to provide the Programmer's Console and paper tape device.</p> <p>* To modify the 8M Programmer's Console for PDP8-A or KL8A Maintenance, solder a wire from the lower tab (marked blue) on the left side of the front panel to omnibus pin D2B.</p> <p><b>IV Installation</b></p> <p>The KL8-A has switches to select baud rates for each line and to select the type of receivers used, EIA or 20 ma. Refer to KL8-A prints for settings.</p> <p>Jumpers are used to select the number of bits per character, parity (even, odd, or none), number of stop bits, device codes, and the type of branch addressing used. Reference KL8-A prints for any changes.</p>							
				SIZE <b>A</b>	CODE SP	NUMBER KL8-A-1	REV

DEC FORM NO DEC 16-(381)-1022-N370  
DRA 108

ENGINEERING SPECIFICATION				CONTINUATION SHEET			
TITLE KL8-A Field Service Installation and Acceptance Procedure							
<ol style="list-style-type: none"> <li>1. The KL8-A is shipped in the following configuration <ul style="list-style-type: none"> <li>-Device code 40 and 41</li> <li>-8 branch addresses</li> <li>-Parity disabled</li> <li>-2 stop bits per character</li> <li>-8 data bits per character</li> <li>-Switches, any position</li> </ul> </li> <li>2. Insure the customer does not have, in the omnibus, any option that uses the 40-41 device code.</li> <li>3. Switch PDP8-A power off. Insert the M8319 into a slot other than 1, 2, or 3. Do not have a cable plugged into the M8319.</li> <li>4. If the H326 Patch Panel is used, install the Patch Panel on the rear of the cabinet. Refer to the H326 prints for switch settings.</li> </ol> <p><b>V Acceptance</b></p> <p>MAINDEC-08-DJKLA has 4 types of tests. Refer to the MAINDEC listing for loading and starting instructions.</p> <ol style="list-style-type: none"> <li>1. Internal Logic/Data Test No cable is attached, the programmable loopback is used. Run test for 5 minutes with no errors.</li> <li>2. Operator Intervention Test This test checks the baud rates on all lines. The program will run and the operator must time the test to be 30 seconds, ±.5 seconds.</li> <li>3. Modem Control and 20 ma Data Test This test requires the 70-11451 test plug. If the test plug is not available, the H326 Patch Panel may be used. If the H326 Patch Panel is used, the modem control signals are not checked for correct operation. Run this test for 5 minutes with no errors.</li> </ol>							
				SIZE <b>A</b>	CODE SP	NUMBER KL8-A-1	REV

DEC FORM NO DEC 16-(381)-1022-N370  
DRA 108

ENGINEERING SPECIFICATION				CONTINUATION SHEET			
TITLE KL8-A Field Service Installation and Acceptance Procedure							
<ol style="list-style-type: none"> <li>4. Terminal/Keyboard Test This test is optional and can only be run if a terminal is available. Run this test for 5 minutes.</li> </ol> <p>After all tests have been performed with no errors, the M8319 must be set up to customer specifications, and re-inserted into the bus. Refer to the KL8-A Prints for jumper and switch settings.</p>							
				SIZE <b>A</b>	CODE SP	NUMBER KL8-A-1	REV

DEC FORM NO DEC 16-(381)-1022-N370  
DRA 108

**DIGITAL EQUIPMENT CORPORATION**  
MAYNARD, MASSACHUSETTS  
**PARTS LIST**

MADE BY Larry Narhi  
 DATE 7-28-75  
 ENG Larry Narhi  
 DATE 10-13-75

CHECKED Sid Roberts  
 DATE 10-13-75  
 PROD Ken McCard  
 DATE 10/20/75

SECTION 1  
 ISSUED SECT. 1

QUANTITY/VARIATION

ITEM NO.	DWG NO. / PART NO.	DESCRIPTION
----------	--------------------	-------------

1.	MP-KL8-A	*KL8-A MAINTENANCE PRINT SET
2.	A-PL-KL8-A-3	*KL8-A SOFTWARE LIST

\* THIS ITEM IS AN OPTION AND IS TO BE SHIPPED ONLY WHEN PURCHASED AS A SEPARATE ITEM.

TITLE SHIPPING LIST, KL8-A	ASSY NO. A-PL-KL8-A-Ø	SIZE A	CODE PL	NUMBER KL8-A-2	REV.	ECONO.
SHEET 1 OF 1		DIST.				

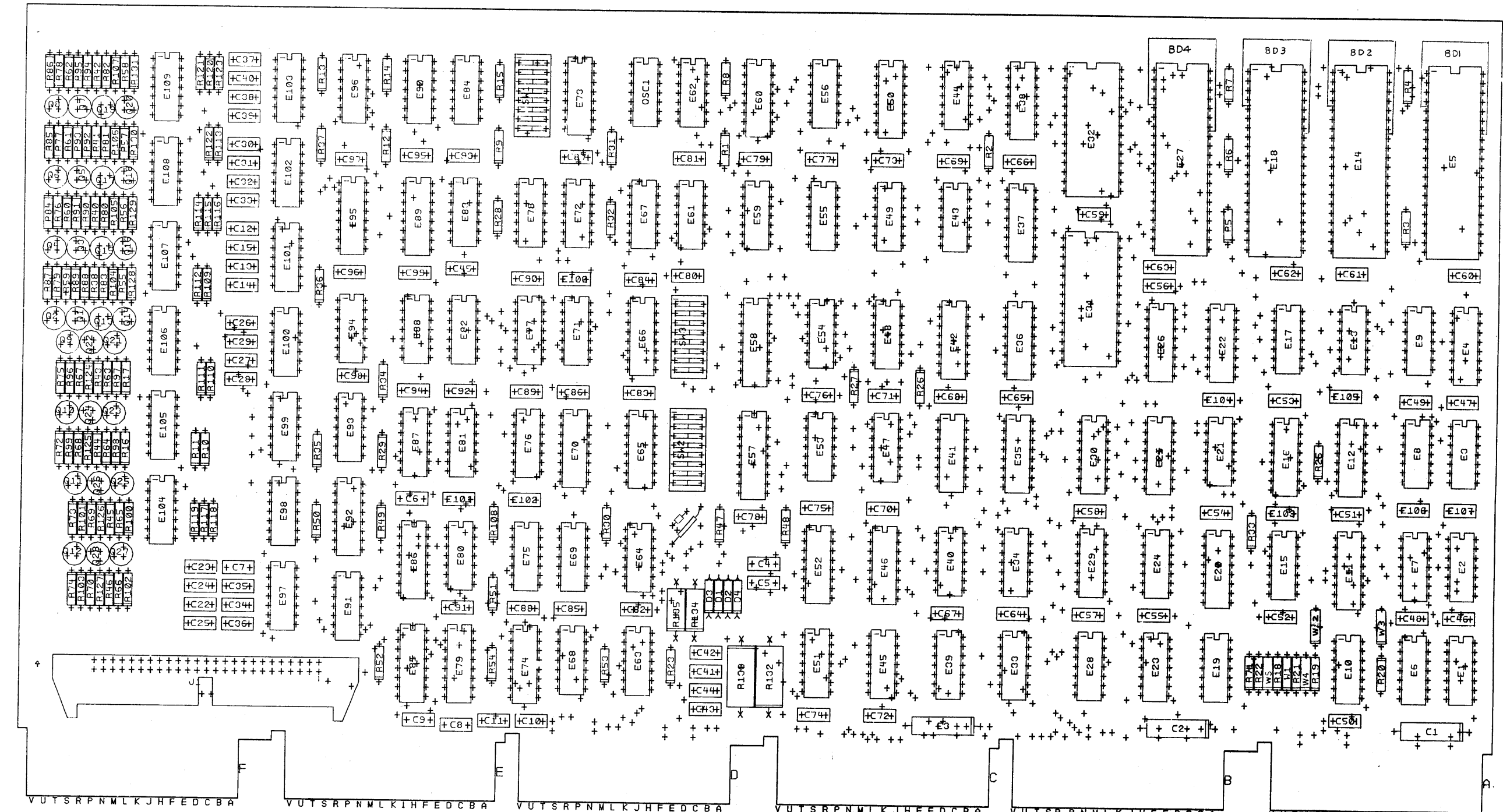
**DIGITAL EQUIPMENT CORPORATION**  
 MAYNARD, MASSACHUSETTS  
**PARTS LIST**

QUANTITY / VARIATION

MADE BY Larry Narhi		CHECKED <i>Sid Roberts</i>	SECTION									
DATE 7-28-75		DATE 10-13-75	1									
ENG <i>Larry Narhi</i>		PROD <i>Ken M. Scobee</i>	ISSUED SECT.									
DATE 10-13-75		DATE 10/13/75	1									
ITEM NO.	DWG NO. / PART NO.	DESCRIPTION	KL8-A									
1.	MA INDEC Ø8-DJKLA-A	KL8-A DIAGNOSTIC	1									
2.	MA INDEC X8-DIKLC-A	KL8-A DECX8 MODULE	1									
TITLE SOFTWARE LIST, KL8-A			ASSY NO. A-PL-KL8-A-2	SIZE CODE <b>A PL</b>	NUMBER KL8-A-3						REV <b>A</b>	ECO NO. <b>KL8-A-00001</b>
SHEET 1 OF 1				DIST								

THIS DRAWING AND SPECIFICATIONS, HEREIN, ARE THE PROPERTY OF DIGITAL EQUIPMENT CORPORATION AND SHALL NOT BE REPRODUCED OR COPIED OR USED IN WHOLE OR IN PART AS THE BASIS FOR THE MANUFACTURE OR SALE OF ITEMS WITHOUT WRITTEN PERMISSION.  
 COPYRIGHT © 1972 DIGITAL EQUIPMENT CORPORATION

COMPONENT SIDE VIEW



NOTES:  
 1. W2, W3, W4, W5 ARE OPTIONAL JUMPERS. INSTALL JUMPER BOARDS BETWEEN UARTS (E5, I4, I8 & 27) AND ETCH BOARD HAND SOLDER ON SIDE ONE & PLACES ON EACH JUMPER BOARD TO UART PINS

CHK	CHANGE NO	REV	DATE	BY	APP
E1	M8319-00000	C	4-1-74	L. NARHI	
E2	M8319-00002	D	3-1-74	L. NARHI	
E3	M8319-00003	E	4-1-74	L. NARHI	
E4	M8319-00004	F	4-1-74	L. NARHI	

NOTE: 2. REMOVE THE FOLLOWING GOLD FINGERS FROM ARTWORK. DELETE FINGERS ON SIDE 1: AD1, AE1, AH1, AJ1, AK1, AL1, AM1, BD1, BE1, BH1, BJ1, CU1, DD1, DE1, DH1, DJ1. DELETE FINGERS ON SIDE 2: AB2, AD2, AE2, AH2, AJ2, AK2, AL2, AM2, AP2, AR2, AS2, AU2, BB2, BD2, BE2, BH2, BJ2, BK2, BL2, BM2, BP2, BR2, BS2, BU2, CB2, CK2, CL2, CM2, CR2, CS2, CU2, DD2, DE2, DH2, DJ2, DK2, DL2, DM2, DP2, DR2, DS2, DU2.

SIGNATURES		DATE	digital	TITLE	MULTIPLE SERIAL
DRN	<i>[Signature]</i>	7/2/74			
CHK'D	<i>[Signature]</i>	7/2/74			
ENG.	<i>[Signature]</i>	7/2/74			
PROJ. ENG.	<i>[Signature]</i>	7/2/74			
PROD.	<i>[Signature]</i>	7/2/74			
SCALE	2/1		SIZE CODE	NUMBER	REV
SHT.	1 OF 1		D	UA	M8319-0-0
ETCH REV D FIRST USED ON B-DD-M8319-					



PARTS LIST

LINE	ITEM	DOCUMENT NUMBER	PART NUMBER	DESCRIPTION	QTY	PER VARIATION	REFERENCE DESIGNATOR
					00		
1	1	D-MD-5011605-0-0	5011605-00	M8319	1		
2	2		1000016-00	100.0 MMF 100V 5%200PPM MICA	1		C4
3	3		1000023-00	330.0 MMF 100V 5%200PPM MICA	8		C12-C15,C22-C25
4	4		1000024-00	470.0 MMF 100V 5%200PPM MICA	4		C37-C40
5	5		1005306-00	6.8MFD 35V 10% S.TANT	3		C1-C3
6	6		1005820-00	22.0 MMF 100V 5%200PPM MICA	6		C6-C11
7	7		1001610-01	.01 MFD50/100V +80-20% DISC	67		C41-C107
8	8		1109502-00	1N 4742 VZ= 12.0 10% 1W Y	4		D1-D4
9	9		1211164-04	SW,DIP 1P 1A 8POS	3		SW1-SW3
10	10		1209941-07	HEADER.100 50POS RT ANGLE	1		J1
11	11		1300195-00	33.0 .50 W 5.0 % CC	1		R134
12	12		1300219-00	68.0 .25 W 5.0 % CC	8		R55-R58,R84-R87
13	13		1300295-00	330.0 .25 W 5.0 % CC	1		R71
14	14		1300365-00	1.0 K .25 W 5.0 % CC	59		R7-R23,R25-R38,R40-R46,R88-R108
15	15		1300417-00	2.20 K .25 W 5.0 % CC	16		R59-R66,R124-R131
16	16		1300432-00	3.0 K .25 W 5.0 % CC	6		R1-R6
17	17		1300479-00	10.0 K .25 W 5.0 % CC	8		R47-R54
18	18		1300510-00	/REPLACED BY 13-13349-00	15		R109-R123
19	19		1301322-00	180.0 .25 W 5.0 % CC	8		R67-R70,R72-R75
20	20		1301423-00	6.80 K .25 W 5.0 % CC	4		R80-R83
21	21		1301874-00	5.60 K .25 W 5.0 % CC	4		R76-R79
22	22		1302253-00	27.0 .50 W 5.0 % CC	1		R135
23	23		1305653-00	22.0 1.0 W10.0 % CC	2		R132,R133
24	24		1509338-00	DEC6531B NPN 310MW SI 40 90 P	12		Q1-Q12
25	25		1503409-01	DEC6534B PNP 310MW SI 40 90 P	16		Q13-Q28
26	26		1811660-02	OSCILLATOR, XTAL 5.0688 MHZ	1		OSC1
27	27		1905547-00	7474 FF-D DUAL,EDGE TRIGG	13		E2,E3,E8,E15,E17,E48,E61,E69, E72,E76,E81,E87,E94
28	28		1905575-00	7400 NAND GATE-QUAD 2IN	3	CONT	E6,E54,E67
29	29		1905576-00	7410 NAND GATE-TRIPLE 3IN	3		E71,E75,E77

REVISION HISTORY		BASIC PART NO: M8319		DRN:	LARRY NARHI	DATE:	21-AUG-80	D I G I T A L			
ENG	ECO NUMBER	REV	SECTION A OF A	CHK'D:	KENT GLEEZEN	DATE:	21-AUG-80	TITLE PARTS LIST			
LN	INITIAL	E	SECTION VARIATION INDEX	DES.ENG:	LARRY NARHI	DATE:	21-AUG-80	MULTIPLE SERIAL LINE UNIT			
	M8319-ML004	F	[A] 00	RESP.ENG.:	LARRY NARHI	DATE:	21-AUG-80	DOCUMENT NUMBER			
			[B]	MFG.ENG.:	TOM LARSEN	DATE:	21-AUG-80	SIZE	CODE	NUMBER	REV
			[C]	ASSEMBLY NUMBER:		TOP DOCUMENT NUMBER:		K	PL	M8319-0-DBP	F
			[D]	D-UA-M8319-0-0		B-DD-M8319-0-0				FILE NAME:	EDIT #
			[E]							Z1651F.PLS	6
			[F]								
			[G]								
			[H]								
			[I]								
			[J]								
			[K]								
			[L]								
			[M]								
			[N]								

"THIS DRAWING AND SPECIFICATIONS HEREIN, ARE THE PROPERTY OF DIGITAL EQUIPMENT CORPORATION AND SHALL NOT BE REPRODUCED OR COPIED OR USED IN WHOLE OR IN PART AS THE BASIS FOR THE MANUFACTURE OR SALE OF ITEMS WITHOUT WRITTEN PERMISSION. COPYRIGHT (C) 1980. DIGITAL EQUIPMENT CORPORATION "

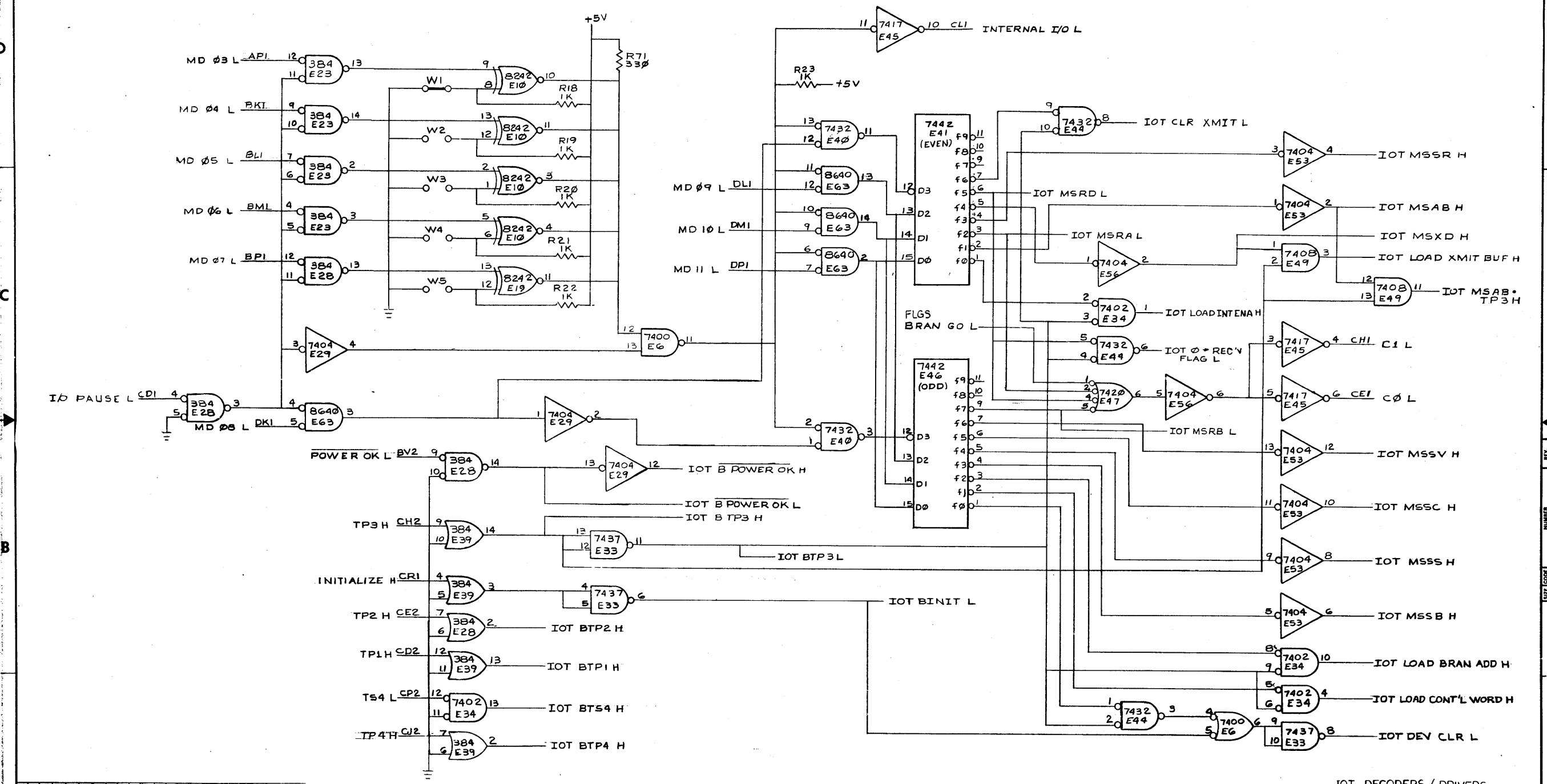
PARTS LIST

LINE ITEM	DOCUMENT NUMBER	PART NUMBER	DESCRIPTION	QTY PER VARIATION 00	REFERENCE DESIGNATOR
30	30	1905577-00	7420 NAND GATE-DUAL 4INPU	1	E47
31	31	1905828-00	7451 A-O-I GATE	2	E84,E96
32	32	1909004-00	DEC 7402 NOR GATE-QUAD 2IN	2	E1,E34
33	33	1909486-00	DEC 384 OR GATE-QUAD 2IN,UTI	3	E23,E28,E39
34	34	190968E-00	7404 INVERTER GATE-HEX 1I	6	E29,E53,E58,E90,E93,E105
35	35	1909705-00	DEC 8881 NAND GATE-QUAD 2IN O	6	E51,E64,E68,E78,E82,E83
36	36	1909712-00	DEC 8242 COMPARATOR-4BIT N,	2	E10,E19
37	37	1909929-00	7417 BUFFER GATE-HEX 1INP	2	E45,E62
38	38	1909934-00	8266 MUS 1 OF 2 (QUAD)	2	E37,E73
39	39	1909935-00	8235 MUX 1 OF 2 (QUAD)	3	E85,E86,E95
40	40	1910046-00	7442 DECODER-1 OF 10,BCD	2	E41,E46
41	41	1910091-00	DEC 7437 AND GATE-QUAD 2IN,BU	1	E33
42	42	1910155-00	DEC 7408 AND GATE,POS.QUAD 2I	8	E7,E9,E24,E43,E49,E59,E80,E88
43	43	1910322-00	DEC 1488L DRIVER,LINE,QUAD,EI	4	E98,E99,E101,E104
44	44	1910323-00	DEC 1489L RECEIVER,LINE,QUAD,	4	E97,E100,E102,E103
45	45	1910436-00	DEC 74123 ONE SHOT-DUAL,RETRIG	3	E74,E79,E92
46	46	1910454-00	DEC 9318 ENCODER, 8 INPUT PRI	2	E12,E36
47	47	1910459-01	UART,WSTRN DIG #TR1602A (1.5 STO	4	E5,E14,E18,E27
48	48	1910537-00	74511 AND GATE-TRIPLE 3INP	1	E21
49	49	1910552-00	745194 SHIFT REG.,4BIT RIGH	1	E11
50	50	1910651-00	DEC 74175 FF-D QUAD	7	E16,E25,E30,E42,E66,E70,E99
51	51	1910652-00	74174 FF-D HEX	2	E22,E26
52	52	1911116-00	DEC 8837 RECEIVER,BUS,HEX,UN	2	E35,E60
53	53	1911315-00	8234 MUX 1 OF 4	4	E20,E38,E50,E65
54	54	1911469-00	DEC 8640 RECEIVER,BUS,QUAD,U	5	E63,E106-E109
55	55	1911521-00	7432 OR GATE-QUAD 2IN, PO	5	E13,E40,E44,E55,E91
56	56	1911676-00	745139 DECODER-DUAL TWO-INP	1	E4
57	57	2112559-00	2812 32XB FIFO MEMORY	2	E31,E32
58	58	2112623-00	DUAL BAUD RATE GEN/PROG DIVIDER,	2	E57,E58
59	59	9009185-00	JUMPER, WIRE, INSULATED, BLACK B	1	W1
60	60	1216988-02	HANDLE,MODULE,HEX TWO EJECTORS	1	
61	61	9006732-00	EYELET, ROLLED FLANGE, .121 OD X	12	
62	62	9105740-55	WIRE(WRAP)30AWG UL1423	A/R	
63	63	1001765-00	.005 MFD 100V 20% Z5T DISC	11	C26-C36
64	64	5012303-00	5012303	4	BD1-BD4
65	65	1912858-00	LS221 ONE SHOT-DUAL,SCHMIT	1	E52
66	66	1000006-00	10.0 MMF 100V 5%200PPM MICA	1	C5

67 NOTE: ITEM #60 PART #1216988-02 IS REPLACING PART #1210711-02

D	I	G	I	T	A	L	TITLE	SECTION A OF A	SIZE	CODE	DOCUMENT NUMBER	REV
							MULTIPLE SERIAL LINE UNIT		K	PL	M8319-0-DBP	F

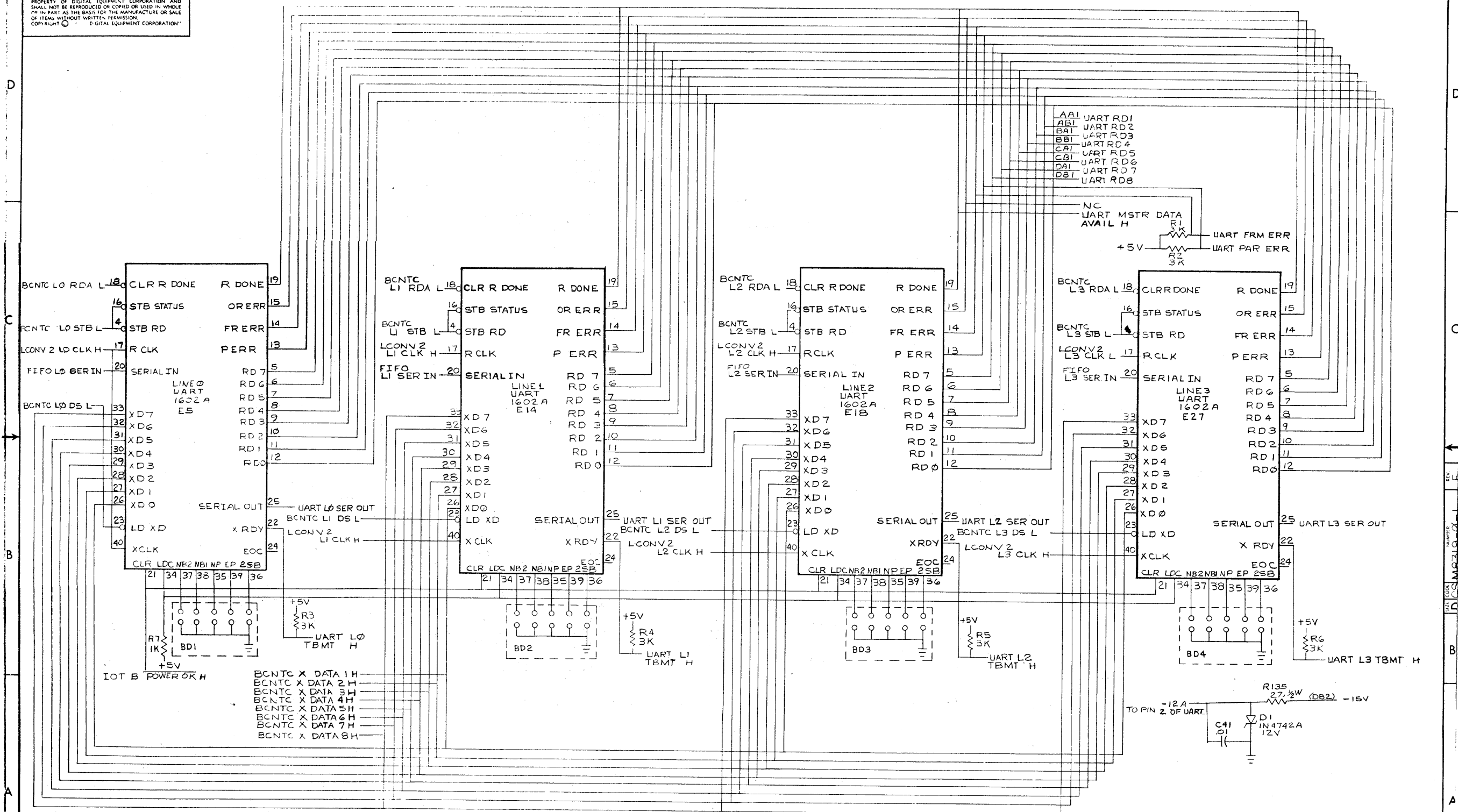
"THIS DRAWING AND SPECIFICATIONS, HEREIN, ARE THE PROPERTY OF DIGITAL EQUIPMENT CORPORATION AND SHALL NOT BE REPRODUCED OR COPIED OR USED IN WHOLE OR IN PART AS THE BASIS FOR THE MANUFACTURE OR SALE OF ITEMS WITHOUT WRITTEN PERMISSION. COPYRIGHT © 1977, DIGITAL EQUIPMENT CORPORATION"



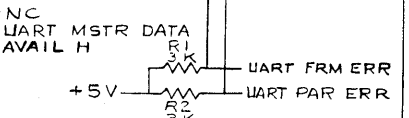
REV.	CHG.	NO.	DATE	BY	CHKD.
1	1	1	4-1-74	L. NARHI	
2	1	1	3 MAY 76	L. NARHI	
3	1	1	10 SEPT 76	L. NARHI	
4	1	1	27 OCT 76	L. NARHI	
5	1	1	3 JAN 77	L. NARHI	
6	1	1		L. NARHI	
7	1	1		L. NARHI	
8	1	1		L. NARHI	

IOT DECODERS / DRIVERS		FIRST USED ON	
DRN	9/1/75	KLBA	
CHKD	9/1/75		
ENG	9/1/75		
PROJ. ENG.	9/1/75		
PROD.	9/1/75		
NEXT HIGHER ASSY.		(IOT)	
B-DD-M8319-0	SIZE CODE	NUMBER	REV.
SCALE	D CS	M8319-0-1	F
SHEET 1	OF 10	DIST.	

THIS DRAWING AND SPECIFICATIONS HEREIN ARE THE PROPERTY OF DIGITAL EQUIPMENT CORPORATION AND SHALL NOT BE REPRODUCED OR COPIED OR USED IN WHOLE OR IN PART AS THE BASIS FOR THE MANUFACTURE OR SALE OF ITEMS WITHOUT WRITTEN PERMISSION. COPYRIGHT © DIGITAL EQUIPMENT CORPORATION



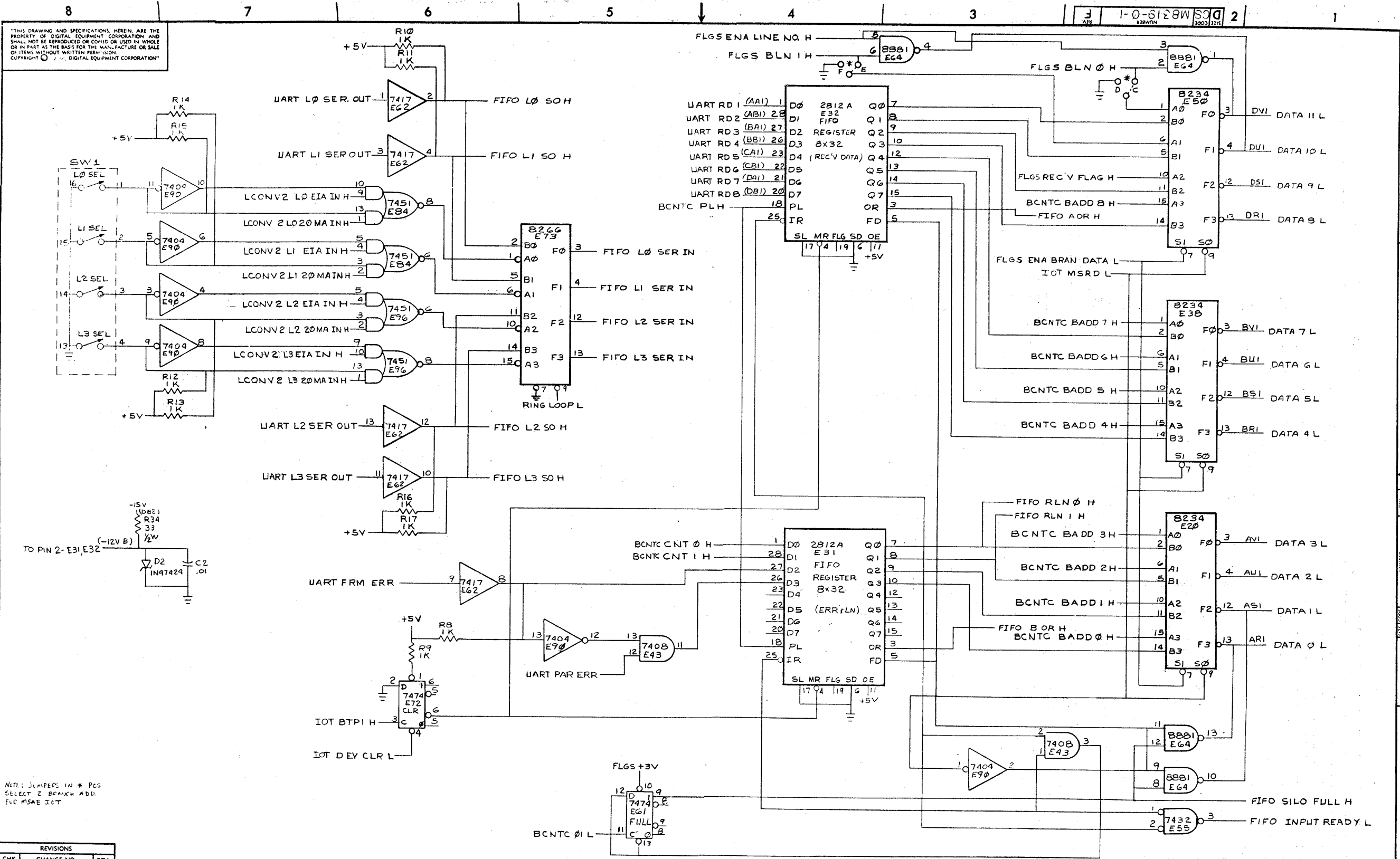
- AA1 UART RD1
- AB1 UART RD2
- BA1 UART RD3
- BB1 UART RD4
- CA1 UART RD5
- CB1 UART RD6
- DA1 UART RD7
- DB1 UART RD8



REVISIONS		
CHK	CHANGE NO.	REV.

TITLE	UART REGISTERS MULTIPLE SERIAL LINE UNIT (UART)	SIZE CODE	NUMBER	REV.
SCALE	SHEET 2 OF 10	D CS	M8319-0-1	F

"THIS DRAWING AND SPECIFICATIONS HEREIN ARE THE PROPERTY OF DIGITAL EQUIPMENT CORPORATION AND SHALL NOT BE REPRODUCED OR COPIED OR USED IN WHOLE OR IN PART AS THE BASIS FOR THE MANUFACTURE OR SALE OF ITEMS WITHOUT WRITTEN PERMISSION OF DIGITAL EQUIPMENT CORPORATION."



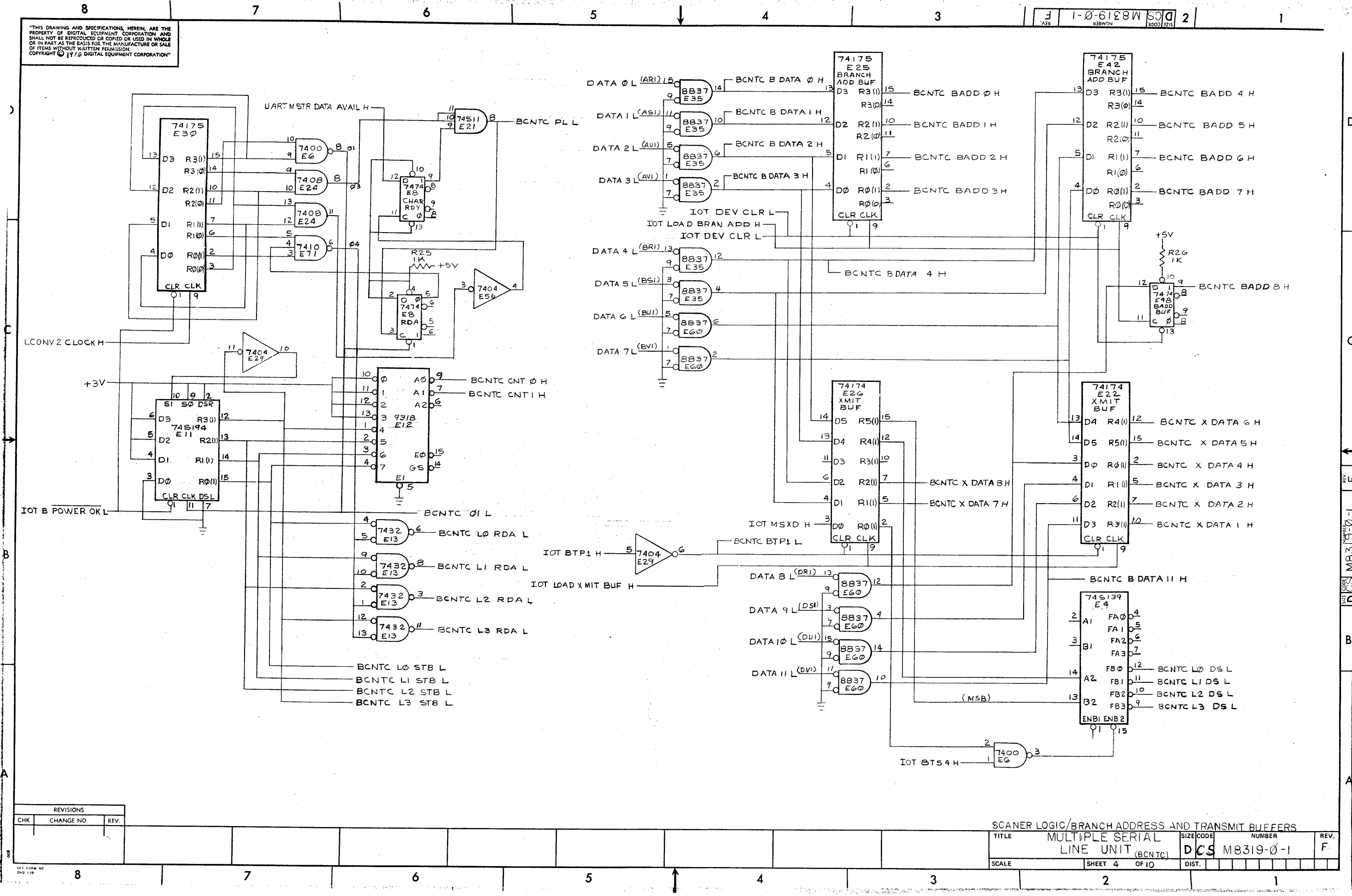
NOTE: JUMPERS IN \* PCB SELECT 2 BRANCH ADDR. FOR MSAB ICT

REVISIONS		
CHK	CHANGE NO.	REV.

TITLE		FIFO REGISTERS	
MULTIPLE SERIAL LINE UNIT (FIFO)		SIZE CODE	NUMBER
SCALE		D CS M8319-0-1	F
SHEET 3 OF 10		DIST.	

"THIS DRAWING AND SPECIFICATIONS HEREIN, ARE THE PROPERTY OF DIGITAL EQUIPMENT CORPORATION AND SHALL NOT BE REPRODUCED OR COPIED OR USED IN WHOLE OR IN PART AS THE BASIS FOR THE MANUFACTURE OR SALE OF ITEMS WITHOUT WRITTEN PERMISSION. COPYRIGHT © 1975 DIGITAL EQUIPMENT CORPORATION"

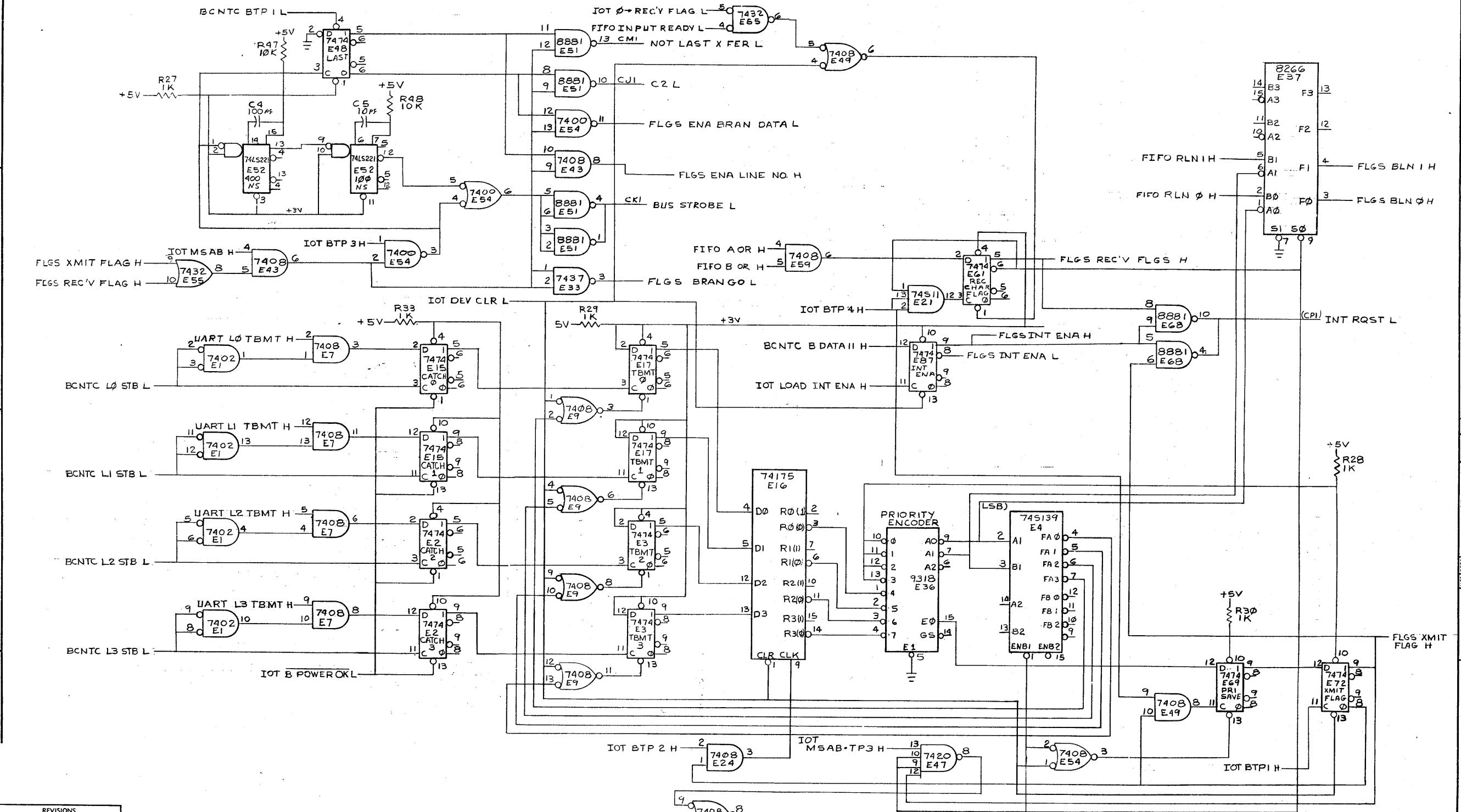
1-0-618W 2



REVISIONS		
CHK	CHANGE NO.	REV.

SCANNER LOGIC/BRANCH ADDRESS AND TRANSMIT BUFFERS			
TITLE	MULTIPLE SERIAL LINE UNIT (BCNTC)	SIZE CODE	NUMBER
		DCS	M8319-0-1
SCALE	SHEET 4 OF 10	DIST.	

THIS DRAWING AND SPECIFICATIONS, HEREIN, ARE THE PROPERTY OF DIGITAL EQUIPMENT CORPORATION AND SHALL NOT BE REPRODUCED OR COPIED OR USED IN WHOLE OR IN PART AS THE BASIS FOR THE MANUFACTURE OR SALE OF ITEMS WITHOUT WRITTEN PERMISSION. COPYRIGHT © 1975 DIGITAL EQUIPMENT CORPORATION

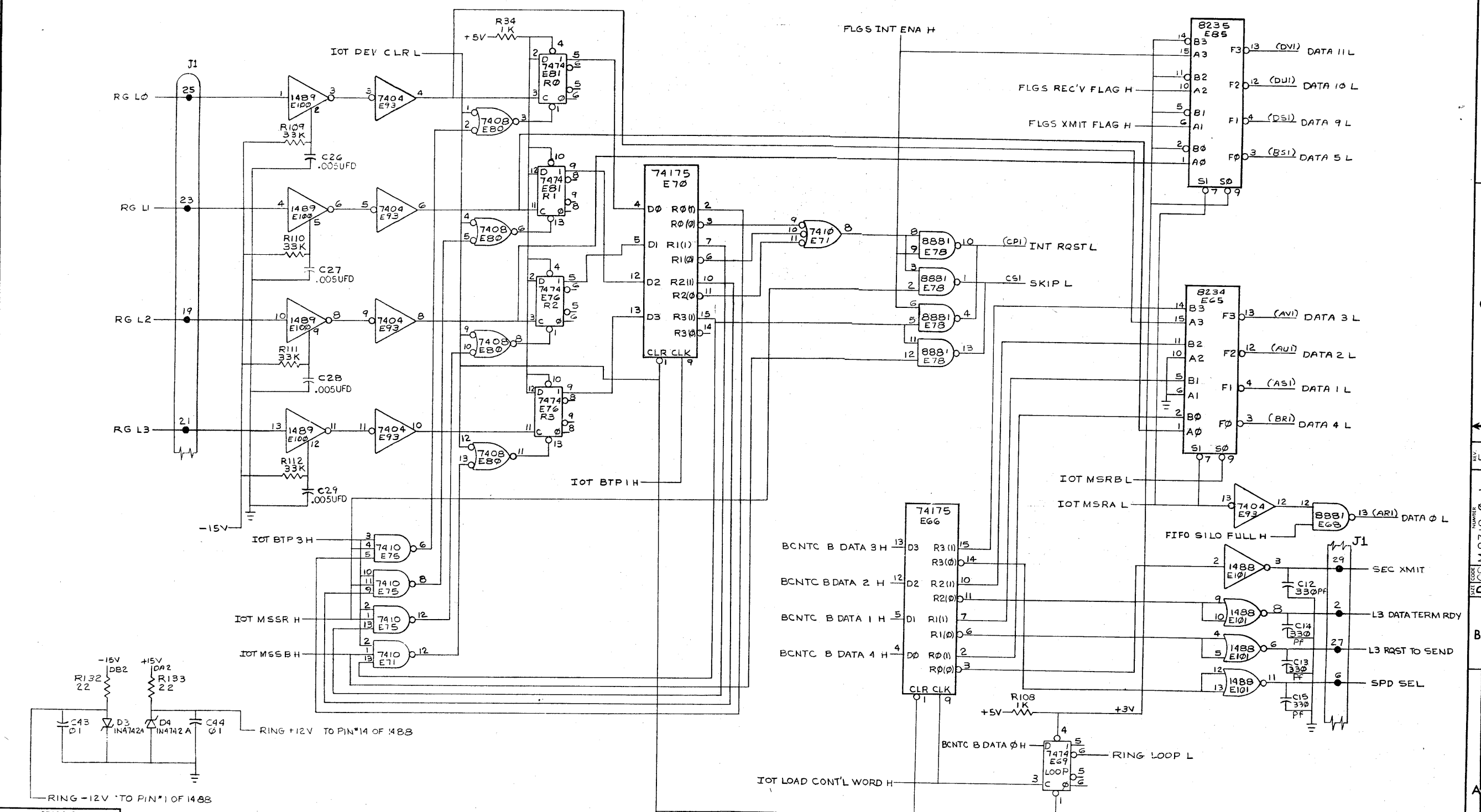


REVISIONS		
CHK	CHANGE NO.	REV.

TITLE	MULTIPLE SERIAL LINE UNIT (FLGS)	SIZE CODE	NUMBER	REV.
SCALE	SHEET 5 OF 10	DIST.	DCS M8319-0-1	F

DRAWING NUMBER: DCS M8319-0-1

"THIS DRAWING AND SPECIFICATIONS, HEREIN, ARE THE PROPERTY OF DIGITAL EQUIPMENT CORPORATION AND SHALL NOT BE REPRODUCED OR COPIED OR USED IN WHOLE OR IN PART AS THE BASIS FOR THE MANUFACTURE OR SALE OF ITEMS WITHOUT WRITTEN PERMISSION. COPYRIGHT © 1973 DIGITAL EQUIPMENT CORPORATION"

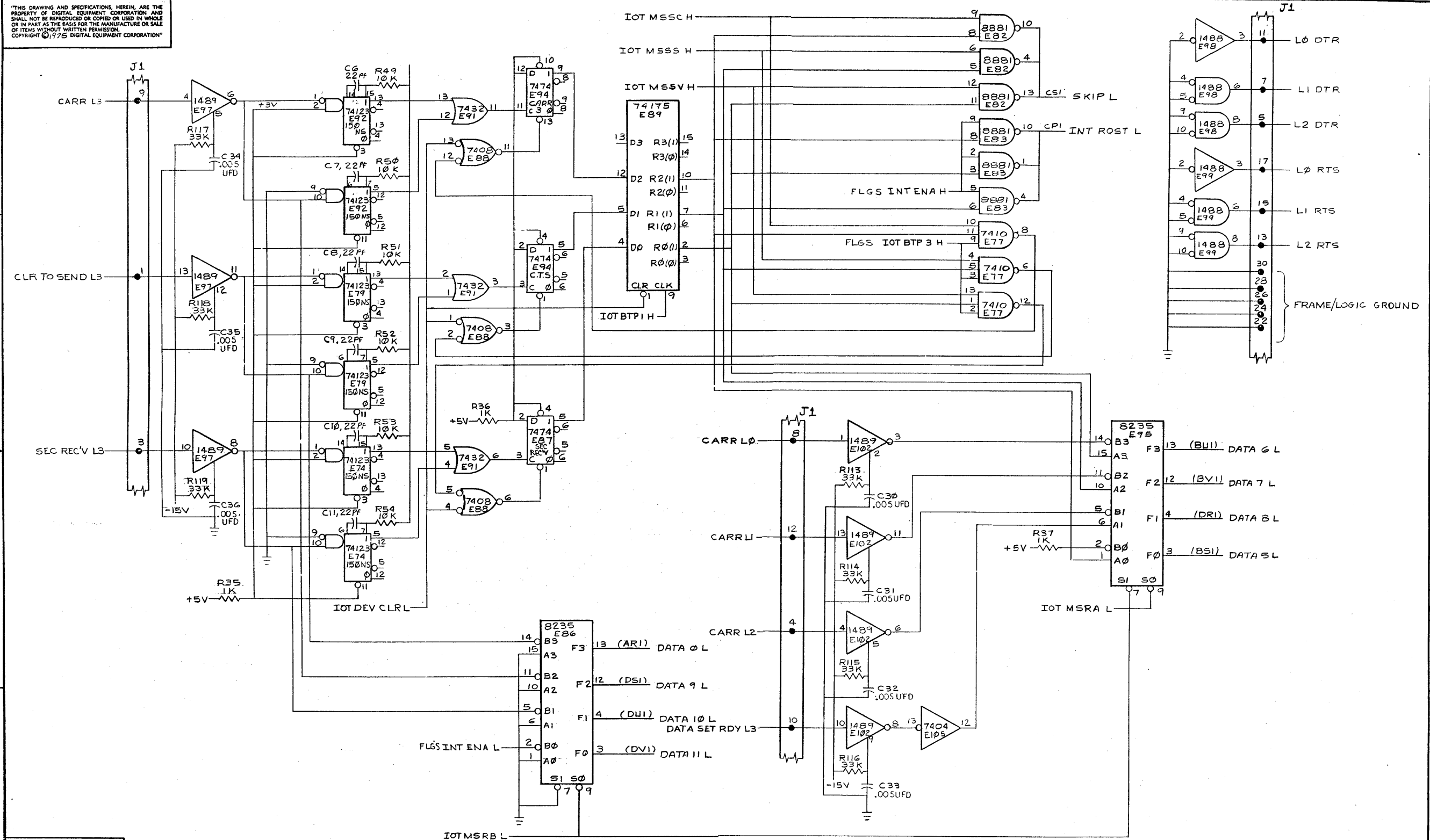


REVISIONS		
CHK	CHANGE NO.	REV.

TITLE				SIZE CODE		NUMBER		REV.	
RING FLIP FLOPS/PART STATUS A & B/CONTROL WORD & DRIVERS				MULTIPLE SERIAL		DCS M8319-0-1		F	
SCALE				SHEET 6 OF 10		DIST.			



"THIS DRAWING AND SPECIFICATIONS, HEREIN, ARE THE PROPERTY OF DIGITAL EQUIPMENT CORPORATION AND SHALL NOT BE REPRODUCED OR COPIED OR USED IN WHOLE OR IN PART AS THE BASIS FOR THE MANUFACTURE OR SALE OF ITEMS WITHOUT WRITTEN PERMISSION. COPYRIGHT © 1975 DIGITAL EQUIPMENT CORPORATION"

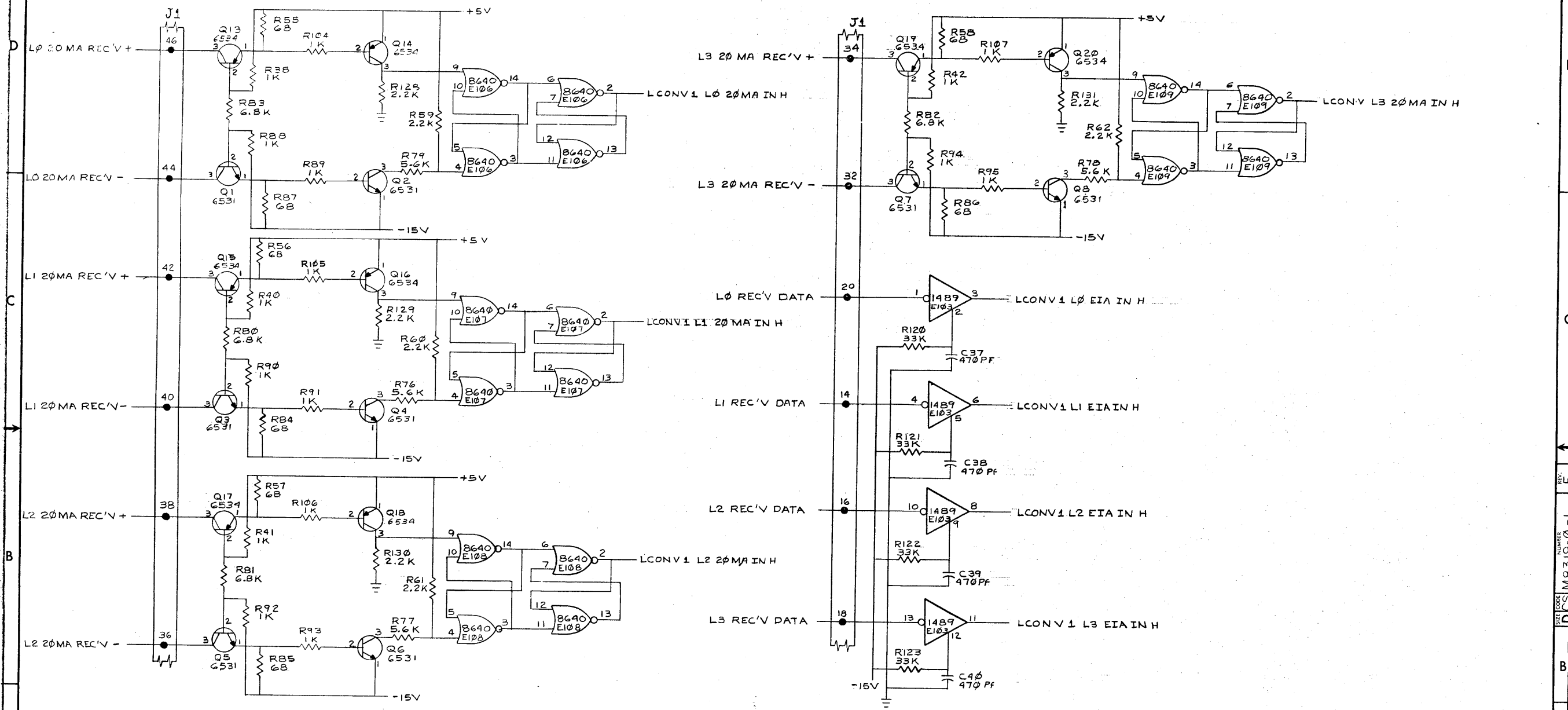


REVISIONS		
CHK	CHANGE NO.	REV.

TITLE	MODEM STATUS SIGNALS	SIZE CODE	NUMBER	REV.
	MULTIPLE SERIAL LINE UNIT (MODM)	DCS	M8319-0-1	F
SCALE	1/1	SHEET	7 OF 10	DIST.

"THIS DRAWING AND SPECIFICATIONS, HEREIN, ARE THE PROPERTY OF DIGITAL EQUIPMENT CORPORATION, AND SHALL NOT BE REPRODUCED OR COPIED OR USED IN WHOLE OR IN PART AS THE BASIS FOR THE MANUFACTURE OR SALE OF ITEMS WITHOUT WRITTEN PERMISSION. COPYRIGHT © 1973 DIGITAL EQUIPMENT CORPORATION"

1-0-6188W SCS | 2 |



REVISIONS		
CHK	CHANGE NO.	REV.

DATA RECEIVERS 20MA & EIA  
 TITLE MULTIPLE SERIAL LINE UNIT (LCONV 1)  
 SIZE CODE DCS NUMBER M8319-0-1 REV. F  
 SCALE SHEET 8 OF 10 DIST.

DEC FORM NO. 080 110

8

7

6

5

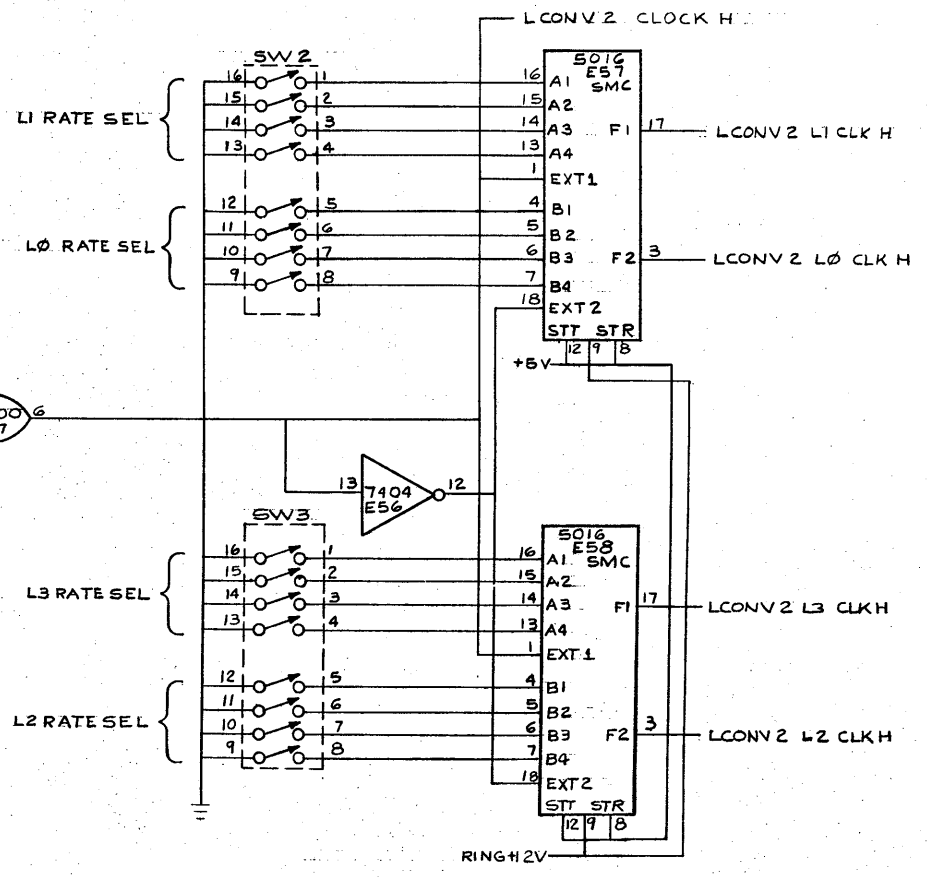
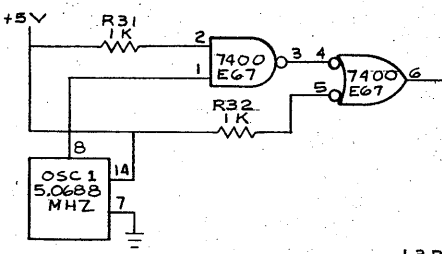
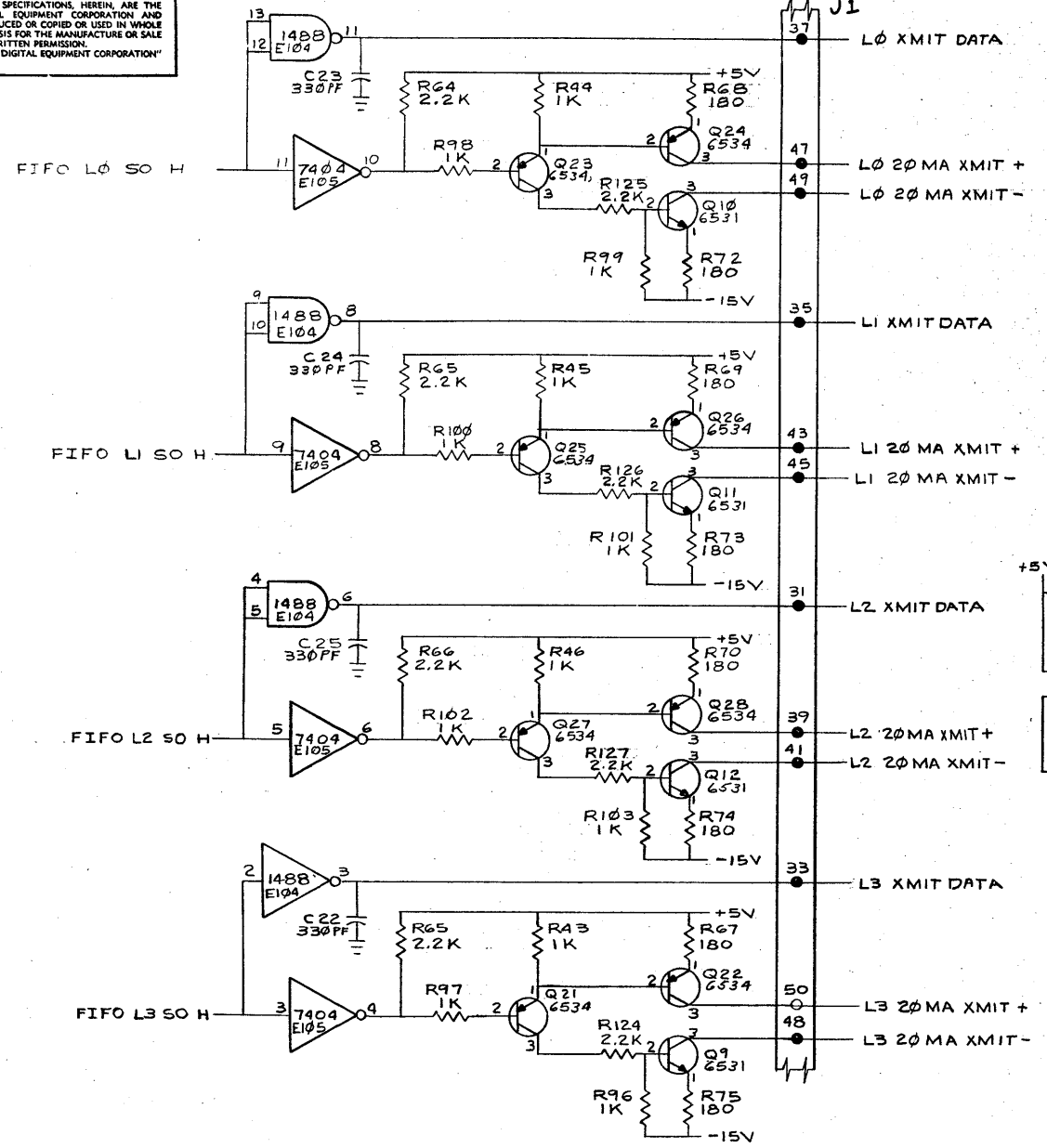
4

3

2

1

"THIS DRAWING AND SPECIFICATIONS, HEREIN, ARE THE PROPERTY OF DIGITAL EQUIPMENT CORPORATION AND SHALL NOT BE REPRODUCED OR COPIED OR USED IN WHOLE OR IN PART AS THE BASIS FOR THE MANUFACTURE OR SALE OF ITEMS WITHOUT WRITTEN PERMISSION. COPYRIGHT © 1975 DIGITAL EQUIPMENT CORPORATION"



REVISIONS		
CHK	CHANGE NO.	REV.

TITLE		DATA DRIVERS 20MA/EIA & BAUD RATE GENERATOR	
MULTIPLE SERIAL LINE UNIT (LCONV2)		SIZE CODE	NUMBER
		D	M 8319-0-1
SCALE	SHEET 9 OF 10	DIST.	REV. F

THIS DRAWING AND SPECIFICATIONS HEREIN ARE THE PROPERTY OF DIGITAL EQUIPMENT CORPORATION AND SHALL NOT BE REPRODUCED OR COPIED OR USED IN WHOLE OR IN PART AS THE BASIS FOR THE MANUFACTURE OR SALE OF ITEMS WITHOUT WRITTEN PERMISSION. COPYRIGHT © 1975 DIGITAL EQUIPMENT CORPORATION

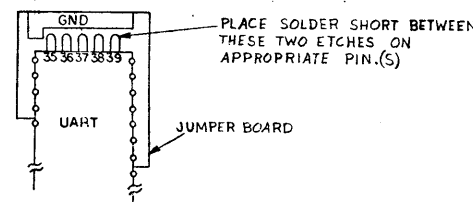
1. S1-1 THRU S1-4 AND 0 CONTROL WHICH LEVEL CONVERTER IS CONNECTED TO THE SERIAL INPUT OF EACH UART WHEN A PARTICULAR SWITCH IS IN THE ON POSITION, THE EIA LEVEL CONVERTER IS CONNECTED. WHEN IN THE OFF POSITION, THE 20 MA LEVEL CONVERTER IS CONNECTED TO THE UART SERIAL. IN NOTE THAT IF THERE IS NO DEVICE CONNECTED TO A GIVEN PAIR OF 20 MA RECEIVE LEADS, THAT SWITCH CORRESPONDING TO THE OPEN LINE MUST BE LEFT IN THE ON POSITION. THE SERIAL OUTPUT OF THE UARTS ARE PERMANENTLY CONNECTED TO BOTH LEVEL CONVERTERS.

Table with 4 columns: Switch ID, Line, Position, and Description. Rows include S1-1 through S1-4.

2. S2 AND S3 CONTROL THE BAUD RATE FOR EACH LINE. S2 CONTROLS LINE 0 AND 1 AND S3 CONTROLS LINES 2 AND 3. NOTE THAT ALL SWITCHES ON S2 OR S3 OFF IS AN ILLEGAL CONFIGURATION. AS THE SELECTED BAUD RATE (19 2K) IS TOO HIGH FOR THE UARTS. THE FOLLOWING TABLE SHOWS THE SWITCH SETTINGS FOR SELECTING THE BAUD RATE FOR EACH OF THE FOUR LINES.

Table with columns for Line (L#), Switch Number (S2-S3), and Baud Rate. Includes a note: \* THE MODULE WILL NOT OPERATE WITH THESE SWITCH SETTINGS.

3. THERE ARE 5 PINS ON EACH UART WHICH CONTROL CERTAIN FEATURES OF THE UART. THESE PINS (35-39) MAY BE OPEN OR GROUNDED. DEPENDING ON THE DESIRED OPERATING CONDITIONS OF EACH UART. TO GROUND A UART PIN, PLACE A SOLDER BRIDGE (SHORT) ACROSS THE APPROPRIATE ETCH ON THE JUMPER BOARD. THE DRAWING BELOW ILLUSTRATES A TYPICAL JUMPER BOARD ON A UART.



THE FOLLOWING TABLES DEFINE THE OPERATING CHARACTERISTICS OF ANY OF THE FOUR UARTS WITH JUMPER(S) OUT (PIN OPEN) AND JUMPER(S) IN (PIN GROUNDED).

Two tables: one for JUMPER options (NAME, PIN#, OPTION SELECTED) and one for BITS/CHAR settings (NAME, BITS/CHAR, Jumper position).

\* WITH SB JUMPER IN AND 5 BITS/CHAR SELECTED, UART PRODUCES 1.5 STOP BITS.

4. THERE ARE TWO JUMPERS ON THE M8319 THAT CONTROL BRANCH ADDRESSING FORMAT. NORMAL CONFIGURATION IS 8 BRANCH ADDRESSES. TO CHANGE TO 2 BRANCH ADDRESSES (1 FOR TRANSMIT / 1 FOR RECEIVE) MOVE THE TWO JUMPERS INTO THE POSITION SHOWN IN DOTTED LINES. ON THE BRANCH JUMPER DETAIL DRAWING.

5. THE MODULE (M8319) AS IT IS SHIPPED FROM THE FACTORY, IS JUMPED FOR THE FOLLOWING CONFIGURATION:

Table with columns: JUMPER(S), IN / OUT, and CONFIGURATION. Lists settings for EP, NB1, NB2, 2 SB, NP, BRAN, and W1-W5.

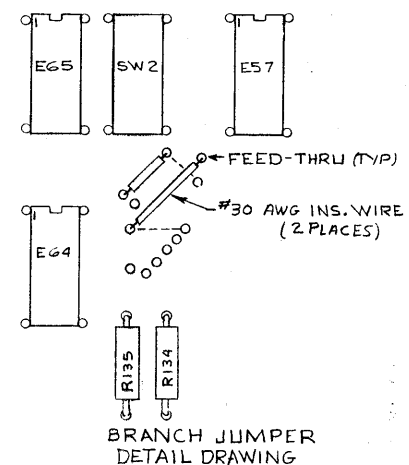
NOTE. THAT EVEN THOUGH THE EP JUMPER IS OUT, INDICATING EVEN PARITY, THE NP JUMPER OUT OVERRIDES THE EP JUMPER, DISABLING THE PARITY CIRCUITS IN THE UARTS.

6. JUMPERS W1 THRU W5 MAY BE CONFIGURED PER TABLE TO SELECT IOT SERVICE CODE 00 THRU 76. THE JUMPERS ARE LOCATED IN THE LOWER RIGHT-HAND CORNER OF THE MODULE, AS VIEWED WITH HANDLE UP, SIDE 1 FACING UP.

Two tables for IOT service codes. Left table shows MD3, 4, 5 jumper settings for codes 0-7. Right table shows MD6, 7 jumper settings for codes 0-7.

EXAMPLE: TO SELECT IOT 34, JUMPERS W2, W3, AND W4 WOULD BE IN. JUMPERS W1 AND W5 WOULD BE OUT.

NOTE: IOT DEVICE CODES BELOW 30 SHOULD NOT BE USED UNLESS IT IS KNOWN FOR CERTAIN THAT NO IOT CONFLICTS WILL OCCUR. SEE DRAWING D-UA-M8319-0-0 FOR JUMPER LOCATIONS.



7. IF KL8-A (M8319) IS USED WITH/ON AN 8E CPU BASED SYSTEM THE FOLLOWING ECO'S MUST BE VERIFIED AS BEING INSTALLED; ECO# M8300-00005 ECO# M8310-00008

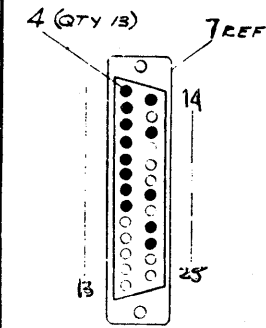
REVISIONS table with columns: CHK, CHANGE NO., REV.

"THIS DRAWING AND SPECIFICATIONS HEREIN ARE THE PROPERTY OF DIGITAL EQUIPMENT CORPORATION AND SHALL NOT BE REPRODUCED OR COPIED OR USED IN WHOLE OR IN PART AS THE BASIS FOR THE MANUFACTURE OR SALE OF ITEMS WITHOUT WRITTEN PERMISSION OF DIGITAL EQUIPMENT CORPORATION" COPYRIGHT © 1975

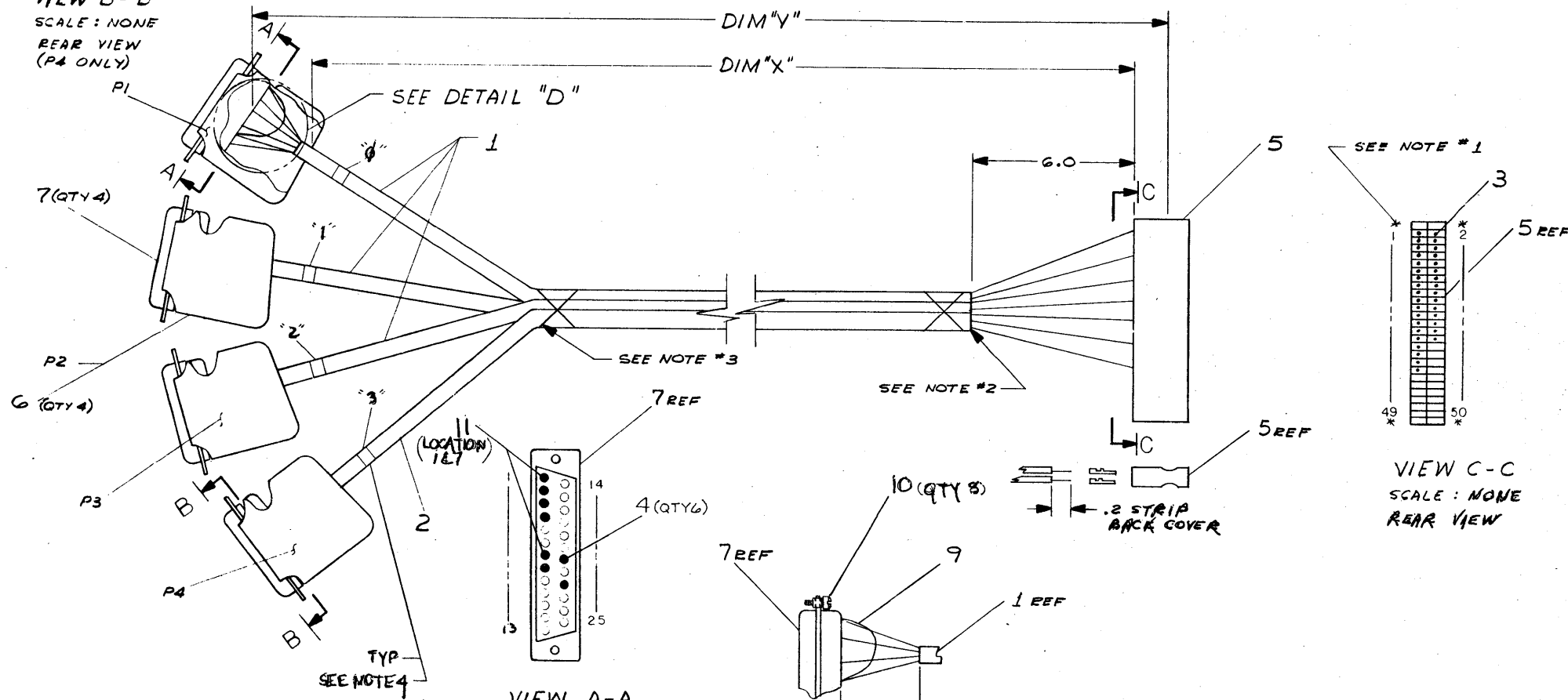
LEGEND	
NUMBER	VARIATION
BC03W-25	DIM "X" VARIATION 24 FT-10.8 IN
	DIM "Y" (PRECUT) REF 25 FT-0 IN

**NOTES:**

- \* DENOTES CAVITIES NOT USED OR DESIGNATED BY NUMBERS
- ALL UNUSED WIRES TO BE CUT AT BOTH ENDS OF CABLE JACKET
- CABLE TIES (ITEM # 8) TO BE USED APPROX EVERY 3.0 IN. WHEN NECESSARY
- CABLE TO BE IDENTIFIED USING "BRADY MARKERS" OR OTHER SUITABLE COMPONENT MARKER.



VIEW B-B  
SCALE: NONE  
REAR VIEW  
(P4 ONLY)



VIEW A-A  
SCALE: NONE  
(P1, P2, & P3)  
REAR VIEW

DETAIL "D"  
SCALE: NONE  
(TYP FOR P1, P2 & P3)

VIEW C-C  
SCALE: NONE  
REAR VIEW

DESCRIPTION	DWG. PART NO.	ITEM NO.
- 6 PIN CONTACT, 16 AWG	1210493-07	11
- 8 MALE SCREW RETAINER	9009722	10
- 45 PR WIRE #22 AWG (BLK)	9107350-00	9
- 15 CABLE TIES	9007550	8
- 4 SHELL & INSERT	1210493-01	7
- 4 HOOD & STRAIN RELIEF	1210493-50	6
- 1 CONNECTOR	1210918-10	5
- 31 PIN CONTACT	1210493-05	4
- 34 SOCKET CRIMP	1210059-05	3
- 35 FT CABLE (15 COND)	9107672	2
- 75 FT CABLE (10 COND)	9107623	1

QUANTITY & VARIATION		DESCRIPTION		DWG. PART NO.		ITEM NO.
		UNLESS OTHERWISE SPECIFIED DIMENSIONS ARE IN INCHES				
ANGLES	50° 30'	CLASS OF ACCURACY	OVER	OVER	OVER	OVER
SURFACE QUALITY	IN	(CHECK ONE)	0.2	0.2	0.2	0.2
		MEDIUM	±.004	±.008	±.012	±.016
		PREFERRED	±.012	±.016	±.025	±.04
						±.063

THIRD ANGLE PROJECTION	DRN: [Signature]	FIRST USED ON
REMOVE BURRS AND BREAK SHARP CORNERS	CHK'D: [Signature]	KL8A
DO NOT SCALE DWG	ENGR: [Signature]	digital
MATERIAL SEE PARTS LIST	PROL. ENG. [Signature]	TITLE
FINISH	PROD. [Signature]	CABLE ASSY
	NEXT HIGHER ASSY.	BC03W
	B-DD-KL8A-0	SIZE
		CODE
		NUMBER
		REV.
		DI A BC03W-0-0
		B

REV.	CHANGE NO.	DESCRIPTION	DATE
1	1	ISSUE FOR PRODUCTION	10/17/75
2	2	REVISED TO ADD CABLE TIES	11/10/75
3	3	REVISED TO ADD HOOD & STRAIN RELIEF	12/10/75
4	4	REVISED TO ADD SHELL & INSERT	12/10/75
5	5	REVISED TO ADD SOCKET CRIMP	12/10/75
6	6	REVISED TO ADD PIN CONTACT	12/10/75
7	7	REVISED TO ADD MALE SCREW RETAINER	12/10/75
8	8	REVISED TO ADD WIRE	12/10/75

DEC FORM NO. 100 100

8

7

6

5

4

3

SIZE CODE DIA BC08W-0-0 2

1

"THIS DRAWING AND SPECIFICATIONS HEREIN ARE THE PROPERTY OF DIGITAL EQUIPMENT CORPORATION AND SHALL NOT BE REPRODUCED OR COPIED OR USED IN WHOLE OR IN PART AS THE BASIS FOR THE MANUFACTURE OR SALE OF ITEMS WITHOUT WRITTEN PERMISSION. COPYRIGHT © 1975 DIGITAL EQUIPMENT CORPORATION"

### WIRE TABLE

ITEM NO.	AWG	COLOR	FROM		TO		WIRE LENGTH
			CONNECTION	WITH	CONNECTION	WITH	
1	22	BLK	P1-1	11	P5-30	3	
0		BLK			P1-7	11	1.5 IN.
1		BRN	P1-2	4	P5-37	3	
1		RED	P1-3		P5-20	3	
		ORN	P1-4		P5-17	3	
		YEL	P1-8		P5-8	3	
		GRN	P1-20		P5-11	3	
		BLU	P1-22	4	P5-25	3	
1		BLK	P2-1	11	P5-28	3	
9		BLK			P2-7	11	1.5 IN.
1		BRN	P2-2	4	P5-35	3	
		RED	P2-3		P5-14	3	
		ORN	P2-4		P5-15	3	
		YEL	P2-8		P5-12	3	
		GRN	P2-20		P5-7	3	
		BLU	P2-22	4	P5-23	3	
1		BLK			P5-26	3	
9		BLK	P3-1	11	P3-7	11	1.5 IN.
1		BRN	P3-2	4	P5-31	3	
		RED	P3-3		P5-16		
		ORN	P3-4		P5-13		
		YEL	P3-8		P5-4		
		GRN	P3-20		P5-5		
1		BLU	P3-22		P5-19		
2		BLK	P4-1		P5-24		
		ORN	P4-2		P5-33		
		WHT	P4-3		P5-18		
		BLU/WHT	P4-4		P5-27		
		GRN/WHT	P4-5		P5-1		
		RED/WHT	P4-6		P5-10		
		BLK/WHT	P4-7		P5-22		
		RED/BLK	P4-8		P5-9		
		ORN/BLK	P4-14		P5-29		
		GRN/BLK	P4-16		P5-3		
		BLU/BLK	P4-20		P5-2		
		WHT/BLK	P4-22		P5-21		
2	22	BLU	P4-23	4	P5-6	3	

REVISIONS		
CHK	CHANGE NO.	REV.

DEC FORM NO.

7

6

5

4

3

2

1

TITLE CABLE ASSY  
BC08W  
SCALE --- SHEET 2 OF 2  
SIZE CODE DIA BC08W-0-0  
NUMBER  
REV. B

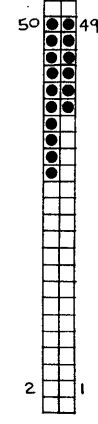
REV. B  
NUMBER  
DIA BC08W-0-0

"THIS DRAWING AND SPECIFICATIONS, HEREIN, ARE THE PROPERTY OF DIGITAL EQUIPMENT CORPORATION AND SHALL NOT BE REPRODUCED OR COPIED OR USED IN WHOLE OR IN PART AS THE BASIS FOR THE MANUFACTURE OR SALE OF ITEMS WITHOUT WRITTEN PERMISSION. COPYRIGHT © 1975, DIGITAL EQUIPMENT CORPORATION"

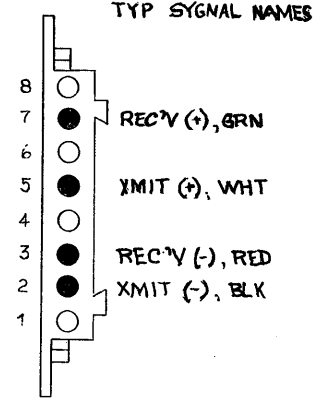
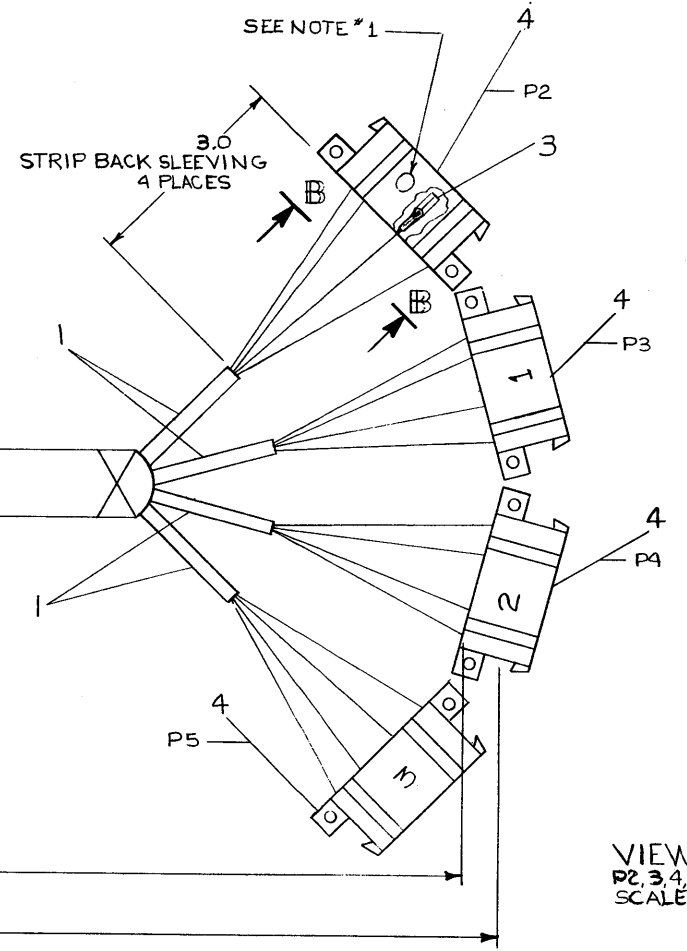
WIRE TABLE				
ITEM NO.	DESCRIPTION	FROM	TO	
NO.	AWG	COLOR	CONN	CONN
1	#22	BLK	P1-49	P2-2
		RED	P1-44	P2-3
		WHT	P1-47	P2-5
		GRN	P1-46	P2-7
		BLK	P1-45	P3-2
		RED	P1-40	P3-3
		WHT	P1-43	P3-5
		GRN	P1-42	P3-7
		BLK	P1-41	P4-2
		RED	P1-36	P4-3
		WHT	P1-39	P4-5
		GRN	P1-38	P4-7
		BLK	P1-48	P5-2
		RED	P1-32	P5-3
		WHT	P1-50	P5-5
		GRN	P1-34	P5-7

LEGEND		
NO.	DIM "X" VARIATION	DIM "Y" PRECUT
BC08X-06	6 FT	6 FT 9 IN. ± 2 IN
BC08X-02	2 FT	2 FT 9 IN. ± 2 IN

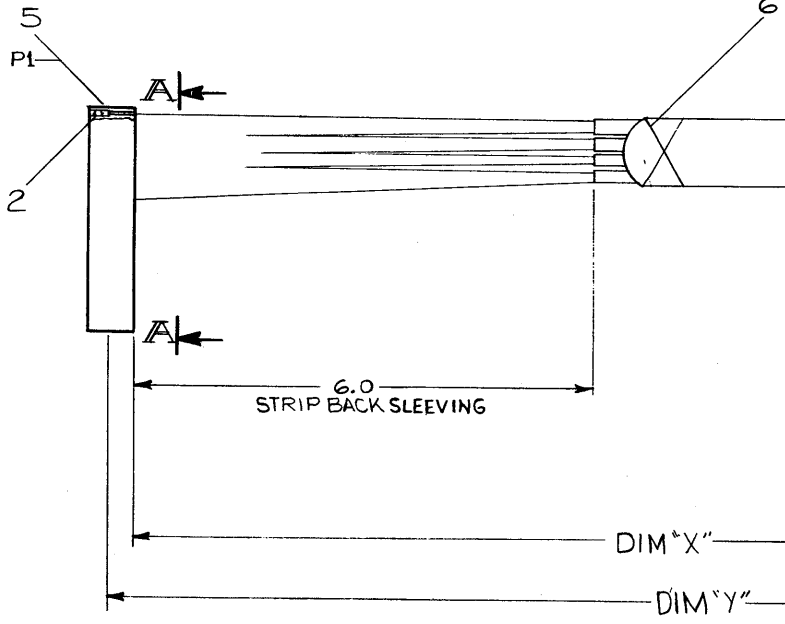
NOTES:  
1 COMPONENT TO BE LABELED WITH COMPONENT IDENTIFIERS, USING BRADY MARKERS



VIEW A-A  
SCALE; NONE



VIEW B-B  
P2, 3, 4, & 5  
SCALE; 2/1



DESCRIPTION	DWG. PART NO.	ITEM NO.
AVR MARKER, TERMINAL	9008356-01	7
4 CABLE TIE	9107880	6
1 HOUSING, 54 CAVITY	1210918-10	5
4 CONN, 8 PIN	1209340-00	4
16 SOCKET	1209379-03	3
22 PIN, (REEL)	1210089-06	2
24 CABLE 4 COND	9107706	1

UNLESS OTHERWISE SPECIFIED DIMENSIONS ARE IN INCHES	
ANGLES	CLASS OF ACCURACY
30° 30'	(CHECK ONE)
SURFACE QUALITY IN	MEDIUM
QUANTITY & VARIATION	MICROINCHES

THIRD ANGLE PROJECTION

REMOVE BURRS AND BREAK SHARP CORNERS

DO NOT SCALE DWG

MATERIAL: B-DD-KL8A-0

FINISH: #

DRN. *[Signature]*

CHK. *[Signature]*

ENG. *[Signature]*

PROJ. ENG. *[Signature]*

PROD. *[Signature]*

FIRST USED ON: KL8A

TITLE: CABLE 50 PIN TO 4-8 PIN

SIZE CODE: D IA

NUMBER: BC08X-0-0

REV: B

SHEET 1 OF 1

DIST.:

REV.	CHANGE NO.	DATE	BY	APP.
A	1	21 SEPT 76	L. NARHI	
B	1	1 OCT 76	L. NARHI	
C	1	30 APR 77	L. NARHI	
D	1	1 MAY 77	L. NARHI	

SEC FORM NO. 100-C

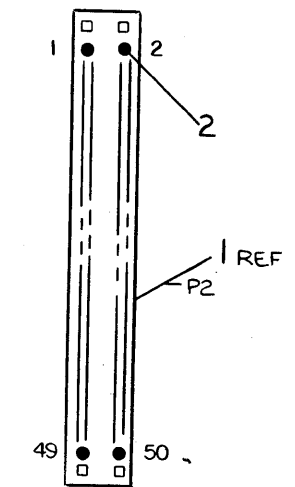
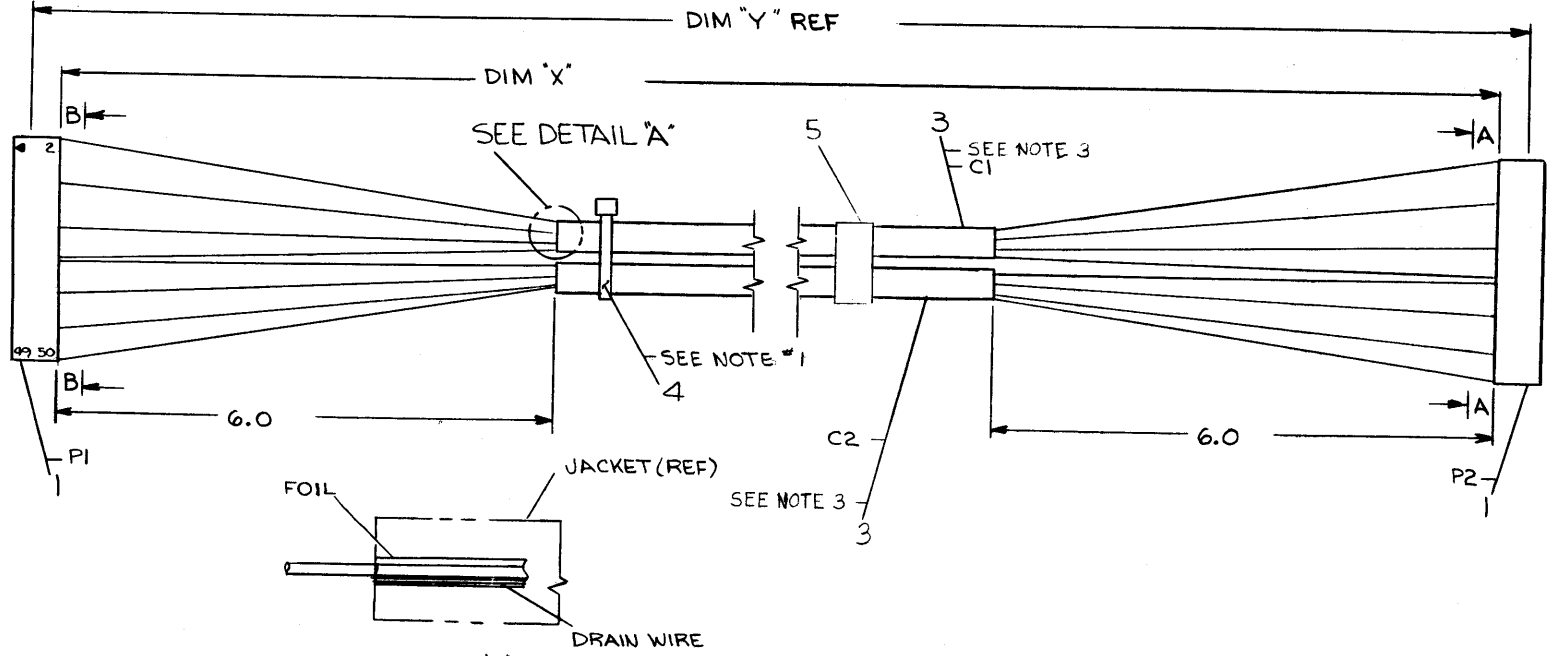
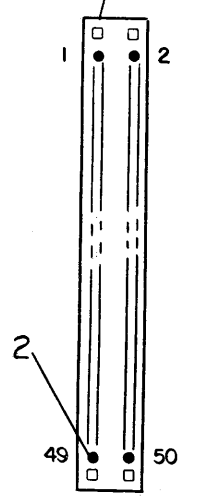
THIS DRAWING AND SPECIFICATIONS HEREIN ARE THE PROPERTY OF DIGITAL EQUIPMENT CORPORATION AND SHALL NOT BE REPRODUCED OR COPIED OR USED IN WHOLE OR IN PART AS THE BASIS FOR THE MANUFACTURE OR SALE OF ITEMS WITHOUT WRITTEN PERMISSION. COPYRIGHT © 1975 DIGITAL EQUIPMENT CORPORATION

ITEM NO	DESCRIPTION		FROM		TO		REMARKS
	AWG	COLOR	CONNECTION	WITH	CONNECTION	WITH	
3	26	BLK/ORN	PI-1	2	P2-2	2	C1
		BRN/RED	PI-2	2	P2-1	2	
		BRN/WHT	PI-3	2	P2-4	2	
		RED/BRN	PI-4	2	P2-3	2	
		RED/ORN	PI-5	2	P2-6	2	
		RED/BLU	PI-6	2	P2-5	2	
		RED/GRY	PI-7	2	P2-8	2	
		ORN/BLK	PI-8	2	P2-7	2	
		ORN/RED	PI-9	2	P2-10	2	
		ORN/WHT	PI-10	2	P2-9	2	
		GRN/BLK	PI-11	2	P2-12	2	
		GRN/WHT	PI-12	2	P2-11	2	
		BLU/BLK	PI-13	2	P2-14	2	
		BLU/RED	PI-14	2	P2-13	2	
		BLU/WHT	PI-15	2	P2-16	2	
		GRY/RED	PI-16	2	P2-15	2	
		GRY/WHT	PI-17	2	P2-18	2	
		WHT/GRY	PI-18	2	P2-17	2	
		WHT/BRN	PI-19	2	P2-20	2	
		WHT/ORN	PI-20	2	P2-19	2	
		WHT/GRN	PI-21	2	P2-22	2	
		GRY/GRN	PI-22	2	P2-21	2	
		WHT/BLU	PI-23	2	P2-24	2	
		GRY	PI-24	2	P2-23	2	
3	26	BLK/BLU	PI-30	2	P2-29	2	C1

ITEM NO	DESCRIPTION		FROM		TO		REMARKS
	AWG	COLOR	CONNECTION	WITH	CONNECTION	WITH	
3	26	BLK/ORN	PI-25	2	P2-26	2	C2
		GRY/GRN	PI-26	2	P2-25	2	
		BLK/BLU	PI-27	2	P2-28	2	
		GRAY	PI-28	2	P2-27	2	
		BRN/RED	PI-29	2	P2-30	2	
		BRN/WHT	PI-31	2	P2-32	2	
		RED/BRN	PI-32	2	P2-31	2	
		RED/ORN	PI-33	2	P2-34	2	
		RED/BLU	PI-34	2	P2-33	2	
		RED/GRY	PI-35	2	P2-36	2	
		ORN/BLK	PI-36	2	P2-35	2	
		ORN/RED	PI-37	2	P2-38	2	
		ORN/WHT	PI-38	2	P2-37	2	
		GRN/BLK	PI-39	2	P2-40	2	
		GRN/WHT	PI-40	2	P2-39	2	
		BLU/BLK	PI-41	2	P2-42	2	
		BLU/RED	PI-42	2	P2-41	2	
		BLU/WHT	PI-43	2	P2-44	2	
		GRY/RED	PI-44	2	P2-43	2	
		GRY/WHT	PI-45	2	P2-46	2	
		WHT/GRY	PI-46	2	P2-45	2	
		WHT/BRN	PI-47	2	P2-48	2	
		WHT/ORN	PI-48	2	P2-47	2	
		WHT/GRN	PI-49	2	P2-50	2	
		WHT/BLU	PI-50	2	P2-49	2	

- NOTES:
- EVENLY SPACE TIE WRAPS (ITEM # 4) OVER GRY JACKET OF C1 & C2 (CABLE, 25 COND) ITEM # 3.
  - CUT BACK DRAIN WIRES AND FOIL IN C1 & C2 THAT COMES WITH GRY AND GRY/GRN WIRES TO GRY JACKET OF ITEM # 3 (CABLE 25 COND) BOTH ENDS.
  - IN BC08Y-IF, COMPLETELY REMOVE GRAY JACKET AND FOIL FROM CABLE BEFORE ATTACHING TIEWRAPS, THUS ASSURING MAXIMUM FLEXIBILITY.

LEGEND			
NUMBER	DIM 'X' VARIATION	DIM 'Y' (PRE CUT) REF	TOL.
BC08Y-10	10.0 FT	10 FT .8 IN	±2.0 IN
BC08Y-05	5.0 FT	5 FT .8 IN	±2.0 IN
BC08Y-1F	1 FT 6 IN	20 IN	±1.0 IN



REV.	CHG.	BY	DATE
1	BC08Y-00001	A	10-27-75
2	BC08Y-00001	A	11-11-75
3	BC08Y-00001	A	11-11-75
4	BC08Y-00001	A	11-11-75
5	BC08Y-00001	A	11-11-75
6	BC08Y-00001	A	11-11-75
7	BC08Y-00001	A	11-11-75
8	BC08Y-00001	A	11-11-75

QTY	DESCRIPTION	DWG. PART NO.	ITEM NO.
1	CABLE, CABLE	3616073-00	5
6	TIE, CABLE	9007880	4
A/R	CABLE, 25 COND	9107736	3
100	SOCKET, CRIMP	1210089-05	2
2	HOUSING, TERMINATION	1210918-10	1

ANGLES	CLASS OF ACCURACY	NOMINAL DIMENSION RANGE INCHES				
		OVER 0 TO 0.2	OVER 0.2 TO 0.5	OVER 0.5 TO 1.2	OVER 1.2 TO 3.0	OVER 3.0 TO 40.0
30°	MEDIUM	±0.008	±0.012	±0.018	±0.024	±0.030
90°	PREFERRED	±0.012	±0.016	±0.025	±0.034	±0.041

THIRD ANGLE PROJECTION

REMOVE BURRS AND BREAK SHARP CORNERS

DO NOT SCALE DWG

MATERIAL SEE PARTS LIST

FINISH: —

DRN: G. King 5-27-75

CHK: G. King 6-4-75

ENG: G. King 6-4-75

PROJ. ENG: G. King 6-4-75

PROD: G. King 6-12-75

FIRST USED ON: H326

TITLE: CABLE ASSY (BC08Y)

SIZE CODE: B-DD-KL8A-0

SCALE: 1/1

SHEET: 2 OF 2

DIST.:

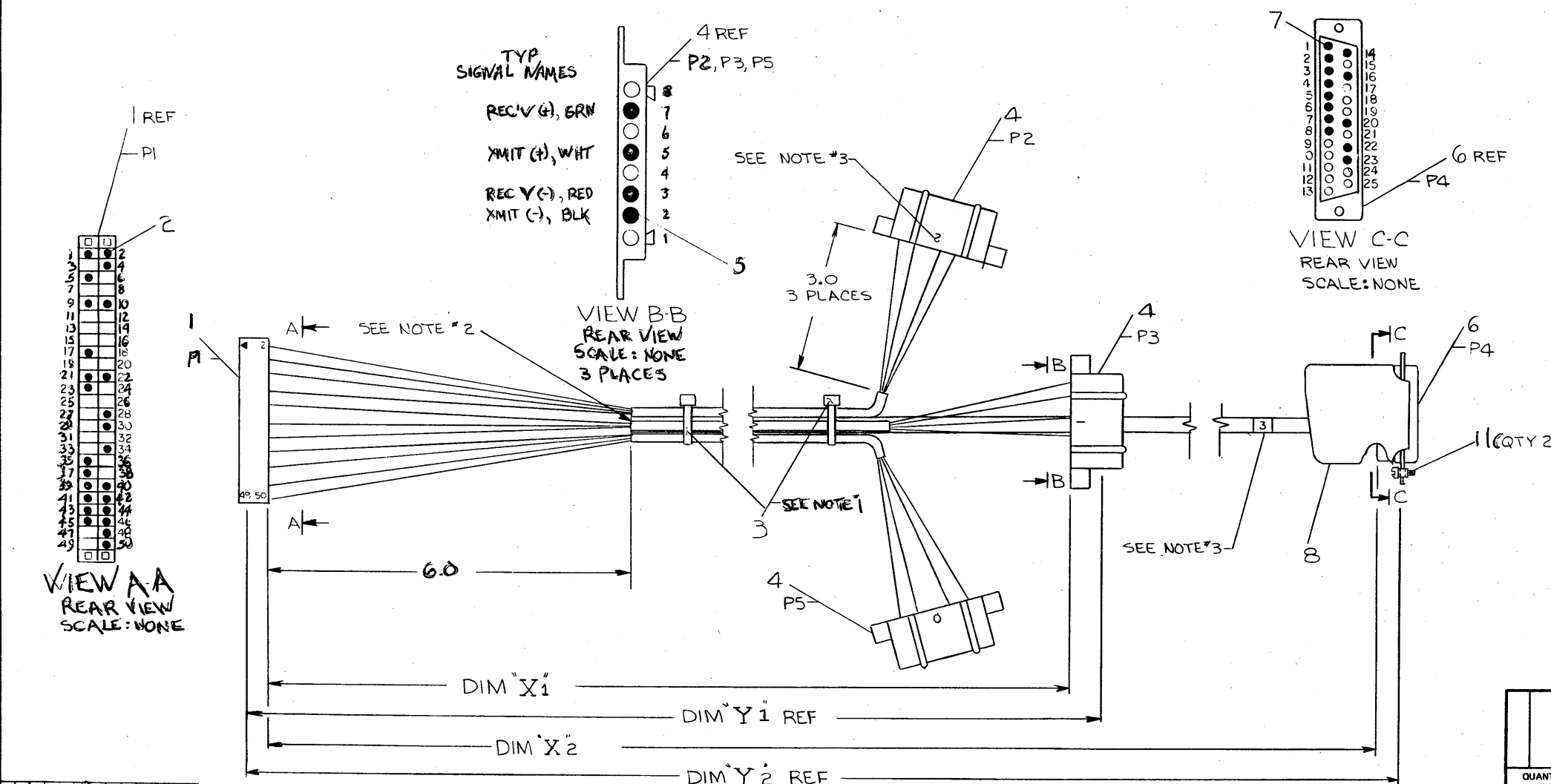


THIS DRAWING AND SPECIFICATIONS HEREIN ARE THE PROPERTY OF DIGITAL EQUIPMENT CORPORATION AND SHALL NOT BE REPRODUCED OR COPIED OR USED IN WHOLE OR IN PART AS THE BASIS FOR THE MANUFACTURE OR SALE OF ITEMS WITHOUT WRITTEN PERMISSION. COPYRIGHT © 1975 DIGITAL EQUIPMENT CORPORATION

WIRE TABLE					
ITEM NO	DESCRIPTION	FROM		TO	
		CONNECTION	WITH	CONNECTION	WITH
10	BLU/BLK	P1-1	2	P4-20	7
	GRN/WHT	P1-2	↑	P4-5	↑
	GRN/BLK	P1-4	↑	P4-16	↑
	BLU	P1-5	↑	P4-23	↑
	RED/WHT	P1-9	↑	P4-6	↑
	RED/BLK	P1-10	↑	P4-8	↑
	WHT	P1-17	↑	P4-3	↑
	BLK/WHT	P1-21	↑	P4-7	↑
	WHT/BLK	P1-22	↑	P4-22	↑
	BLK	P1-23	↑	P4-1	↑
22	BLU/WHT	P1-28	↓	P4-4	↓
	GRN/BLK	P1-30	↓	P4-14	↓
	GRN	P1-34	2	P4-2	7

WIRE TABLE					
ITEM NO	DESCRIPTION	FROM		TO	
		CONNECTION	WITH	CONNECTION	WITH
9	RED	P1-36	2	P2-3	5
	GRN	P1-38	↑	P2-7	↑
	WHT	P1-39	↑	P2-5	↑
9	BLK	P1-41	↑	P2-2	↑
	RED	P1-40	↑	P3-3	↑
	GRN	P1-42	↑	P3-7	↑
9	WHT	P1-43	↑	P3-5	↑
	BLK	P1-45	↑	P3-2	↑
	RED	P1-44	↑	P5-3	↑
9	GRN	P1-46	↑	P5-7	↑
	WHT	P1-47	↑	P5-5	↑
22	BLK	P1-49	2	P5-2	5

NOTES:  
 1. USE CABLE TIES (ITEM 3) APPROXIMATELY EVERY SIX (6) INCHES.  
 2. CUT BACK RED WIRE OF ITEM 10 (CABLE, 15 COND) TO JACKET, BOTH ENDS.  
 3. COMPONENT TO BE LABELED WITH COMPONENT IDENTIFIERS, USING BRADY MARKERS.



LEGEND			
NUMBER	DIM X1 VARIATION	DIM Y1 (PRECUT) REF	TOL
B0082-25	0 FT	6 FT, 9 IN	±2.0 IN
NUMBER	DIM X2 VARIATION	DIM Y2 (PRECUT) REF	TOL
	25 FT	25 FT, 8 IN	±3.0 IN

QTY	DESCRIPTION	DWG. PART NO.	ITEM NO.
1	BRADY MARKER	9008356-01	12
2	MILE SCREW RETAINER	9009722	11
25	CABLE, 15 COND	9107672	10
20	CABLE, 4 COND	9107706	9
1	HOOD & STRAIN RELIEF	1210493-50	8
13	CONTACT, PIN	1210493-05	7
1	SHELL & INSERT	1210493-01	6
12	TERMINAL SOCKET	1209379-03	5
3	HOUSING, 8 PIN	1209340-00	4
12	TIE, CABLE	9007890	3
25	SOCKET, CRIMP	1210089-05	2
1	HOUSING, TERMINATION	1210918-10	1

ANGLES 10° 30'	CLASS OF ACCURACY (CHECK ONE)	NOMINAL DIMENSION RANGE INCHES				
		OVER 0 TO 1.25	OVER 1.25 TO 4.0	OVER 4.0 TO 12.0	OVER 12.0 TO 40.0	OVER 40.0 TO 80.0
SURFACE QUALITY IN	MEDIUM	±.004	±.008	±.012	±.016	±.024
	PREFERRED	±.012	±.016	±.025	±.031	±.041

THIRD ANGLE PROJECTION

REMOVE BURRS AND BREAK SHARP CORNERS

DO NOT SCALE DWG

MATERIAL SEE PARTS LIST

FINISH

DRN. *C. Harvey* 5-1-75

CHK'D. *John G. Kelly* 6-4-75

ENG. *Ray Phillips* 6-4-75

PROJ. ENG. *S. Nickerson* 6-12-75

FIRST USED ON KL8A

TITLE CABLE ASSY

SIZE CODE D IA

NUMBER B0082-0-0

REV. B

SHEET 1 OF 1

DIST.

REV.	DESCRIPTION
1	INITIAL
2	REVISED
3	REVISED
4	REVISED
5	REVISED
6	REVISED
7	REVISED
8	REVISED

# DRAWING DIRECTORY

"THIS DRAWING AND SPECIFICATIONS, HEREIN, ARE THE PROPERTY OF DIGITAL EQUIPMENT CORPORATION AND SHALL NOT BE REPRODUCED OR COPIED OR USED IN WHOLE OR IN PART AS THE BASIS FOR THE MANUFACTURE OR SALE OF ITEMS WITHOUT WRITTEN PERMISSION. COPYRIGHT © 1975, DIGITAL EQUIPMENT CORPORATION"

## CUSTOMER PRINT SET INDEX

THIS IS PRINT SET

DRAWING DIRECTORY  
PANEL, PATCH ASSY H326  
PANEL, PATCH KL8A  
CIRCUIT SCHEMATIC  
LOGO, H326

SEQUENCE

77

B-DD-H326-0  
D-UA-H326-0-0  
D-CS-5411706-0-1  
C-IA-7414372-0-0

SEQUENCE

77

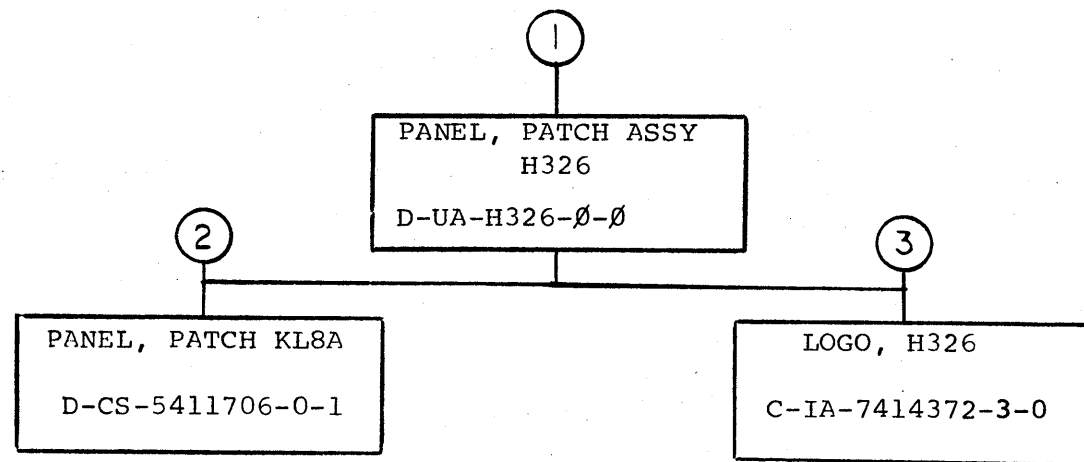
### UNIT VARIATIONS

PRINT SET

VAR	TITLE	1	2	3	4	5	6	7	8	9	10
H326-0	PANEL, PATCH ASSY H326	X									

REVISIONS	DATE	CHG. NO.	REV	USED ON OPTION/MODEL	DRN.	DATE	TITLE	SIZE	CODE	NUMBER	REV								
	7/17	H326-1	A									H326	G. HOVEY	7/15/75	PANEL, PATCH ASSY H326	B	DD	H326-0	A
													CHK'D.	DATE					
													JACK CAHILL	7/16/75					
													PROJ ENG.	DATE					
				PROD.	DATE														
				FIELD SERV.	DATE														
				SHEET 1 OF 3	W. East	10-2-75													

EN-01062-1A-16-R972-(325)



TITLE	SHEET	OF	SIZE	CODE	NUMBER	REV
PANEL, PATCH ASSY H326	2	3	B	DD	H326 - Ø	A

CUSTOMER PRINT SET		ELECTRICAL					CUSTOMER PRINT SET		MECHANICAL							
	MFG. SET	FIND NO.	DRAWING NO.	REV	NO OF SHT	DESCRIPTION	OPTION NO./FILE DATE		MFG. SET	FIND NO.	DRAWING NO.	REV	NO OF SHT	DESCRIPTION	OPTION NO./FILE DATE	
X		1	D-UA-H326-0-0	A	1	PANEL, PATCH ASSY H326				1	D-UA-H326-0-0	A	1	PANEL PATCH ASSY H326		
											D-PS-1212632-0-0		1	COVER, CABLE BOX		
											E-IA-7410666-0-0		1	H317 MOUNTING PLATE		
X		2	D-CS-5411706-0-1		4	PANEL, PATCH ASSY KL8A					C-IA-7413978-0-0		1	BAR CABLE CLAMP		
			K-CO-5411706-0-4		1	X-Y COORDINATE HOLE LOCATION					A-PI-3700091-0-0			PACKAGING INSTRUCTIONS		
			D-AH-5411706-0-5		1	ASSY/DRILLING HOLE LAYOUT										
			B-MH-5411706-0-6		1	MODULE ECO HISTORY										
										X	3	C-IA-7414372-0-0		1	LOGO H326	
													1	SILK SCREEN, H326		

CUSTOMER PRINT SET CODES  
X = PRINT OF DOCUMENT INCLUDED IN PRINT SET  
C = INCLUDES ALL PRINTS INDICATED ON DOCUMENT  
S = CONFIDENTIAL AUTHORIZED SIGNATURE REQUIRED

TITLE: PATCH, PANEL ASSY H326  
SHEET 3 OF 3  
SIZE CODE: B DD  
NUMBER: H326-0  
REV: A